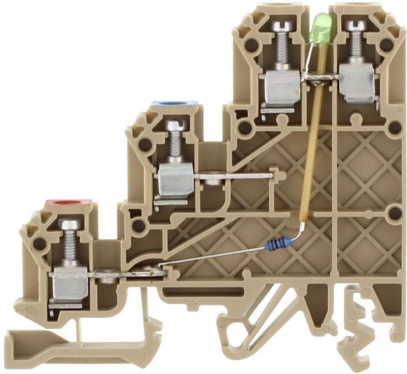
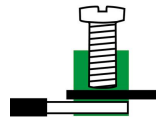
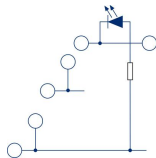


IK 2,5 NPN/DC/LED(GN)/24V BG 1265.2



M2.4



CRA[®] US

Three-level initiator terminal, Screw connection, Mounting type: Mounting rail TS 35/7.5 and TS 32, Rated cross-section: 2.5 mm², Width: 5 mm, Colour: Beige

Commercial

General

Colour: Beige

Country of origin: BG

Customs number: 85369010

GTIN (EAN): 4044211036287

Packaging unit: 100

Product description: Three-level initiator terminal

Quantity unit: PC

Unit of weight: G

Weight per piece (including packaging): 11.25g

Weight per piece (not including packaging): 10.4g

Technical

Dimensions

Height TS 32: 62.8mm

Height TS 35/7.5: 58.3mm

Length: 62.8mm

Width: 5mm

Ratings

Contamination degree: 3

Maximum power dissipation for nominal condition: 2.3W

Overvoltage category: III

Rated cross-section: 2.5mm²

Rated current: 24A

Rated impulse voltage: 4kV

Rated voltage: 250V

Connection data

Connection position: Lateral

Connection principle: Screw connection

Connections: 4

Number of levels: 3

Screw head: Slotted

Screw threading: M 2,4

Stripping length: 7mm

Tightening torque, max.: 0.8Nm

Tightening torque, min.: 0.4Nm

Wire cross-section AWG, max.: 14

Wire cross-section AWG, min.: 22

Wire cross-section single core (rigid)/stranded, max.: 4mm²

Wire cross-section single-core (rigid) / stranded, min.: 0.2mm²

Wire cross-section stranded with wire-end ferrules, max.: 2.5mm²

Wire cross-section stranded with wire-end ferrules, min.: 0.2mm²

Wire cross-section stranded, max.: 4mm²

Wire cross-section stranded, min.: 0.2mm²

Further technical data

Can be cross-connected: ✓

Colour of lamp: Green

End plate required: ✓

Gauge plug acc. to EN 60 947-1: A3

LED switching for: NPN

Mounting type: Mounting rail TS 35/7.5 and TS 32

Number of cross-connection channels: 3

Materials

Flammability class UL 94: V-2

Insulation housing: Polyamide 6.6

Working temperature, max.: 105°C

Working temperature, min.: -40°C

Approvals

cUL Recognized

cUL Recognized: 1

cUL Usegroup B: rated current: 20A

cUL Usegroup B: rated voltage: 300V

cUL Usegroup C: rated current: 20A

cUL Usegroup C: rated voltage: 300V

cUL approval: C22.2 No 158

cUL torque: 5.3Nm

cUL wire cross-section single-core (rigid) AWG, max.: 12

cUL wire cross-section single-core (rigid) AWG, min.: 22

cUL wire cross-section stranded AWG, max.: 12

cUL wire cross-section stranded AWG, min.: 22

cUL wire material: Cu

KEMA KEUR approval

KEMA KEUR approval: EN 60947-7-1:2009

KEMA KEUR approval granted: ✓

KEMA rated current: 24A

KEMA rated impulse voltage: 4kV

KEMA rated voltage: 250V

KEMA torque, max.: 0.8Nm

KEMA torque, min.: 0.4Nm

KEMA wire cross-section single core (rigid), min.: 0.2mm²

KEMA wire cross-section single-core (rigid), max.: 4mm²

KEMA wire cross-section stranded, max.: 4mm²

KEMA wire cross-section stranded, min.: 0.2mm²

UL Recognized

UL Recognized: 1

UL Usegroup B: rated current: 20A

UL Usegroup B: rated voltage: 300V

UL Usegroup C: rated current: 20A

UL Usegroup C: rated voltage: 300V

UL approval: UL 1059

UL factory wiring: ✓

UL field wiring: ✓

UL torque: 5.3Lb In

UL wire cross-section single-core (rigid) AWG, max.: 12

UL wire cross-section single-core (rigid) AWG, min.: 22

UL wire cross-section stranded AWG, max.: 12

UL wire cross-section stranded AWG, min.: 22

UL wire material: Cu

Environment

Environmental Product Compliance

EU-POP Conform: Yes

PROP 65 Conform: Yes

REACH Candidate Substance Note: No

REACH Conform: Yes

REACH Reference date: 2026-02-04

RoHS Conform: Yes

TSCA Conform: Yes

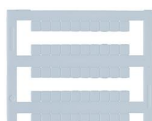
Accessories

End plate



AP 2,5/I BG
2698.2

Quick marking



PMC SB 5/50 WH
4600.7

Cross-connector



Q 20
2700.0



Q 0,5 m/98 Pole
2151.0



Q 10
2425.0



Q 2
2422.0



Q 3
2423.0



Q 4
2424.0

Screwdriver



SDB 0,5x3,0

1085.0

Connecting sleeve



VH 5

2327.0
