

Step 1: Printer Driver Installation

For Windows[®] 7, 8, 10 (32 and 64 bit)

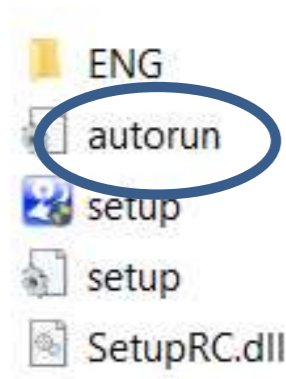
Notice:
Step by Step Guide



- Notice:**
- Turn The TTPCardMAX Off
 - The printer must not be connected to the PC.
 - Unplug the USB cable from the printer

Driver Installation

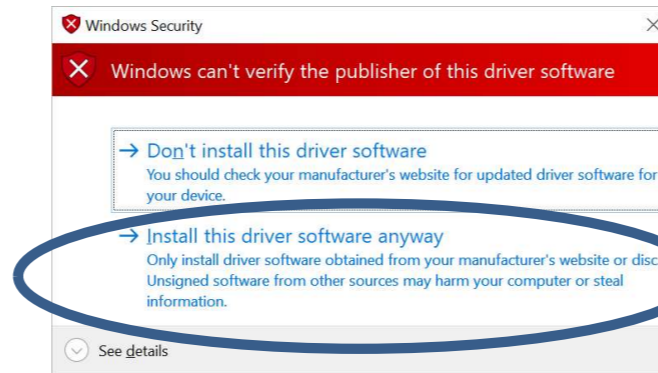
- Copy the content of the Usb-Stick on the PC
- Select the sub-folder \ TTPCardMAX
- Execute **Setup** Program



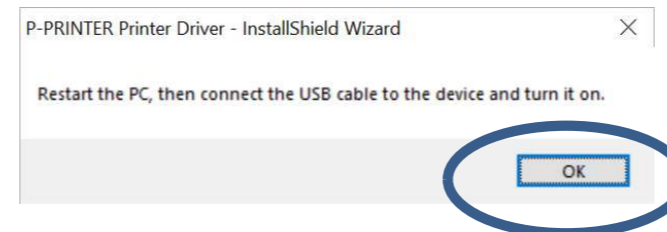
- Continue the Installation
- Press **Next**

The installation continues, it can take a few minutes.

- Press “Install this Driver software anyway”



- A Restart of the PC is requested.

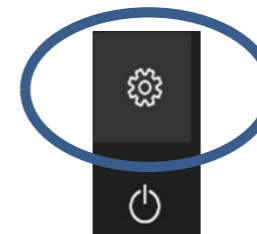


- Notice:**
Automatic Plug and Play TTPCardMAX
- Restart the PC
 - Insert Strong-Black ribbon
 - Turn TTPCardMAX On
 - Wait until TTPCardMAX must be ON LINE

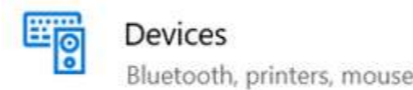
After a few seconds a “new hardware found” message appears.

The P-PRINTER is detected and added.

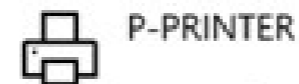
- From **Start**
- Select “**Settings**”



- Select “**Devices**”
- Select **Printers & scanners**



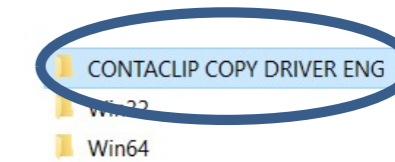
The “P-PRINTER” appears:



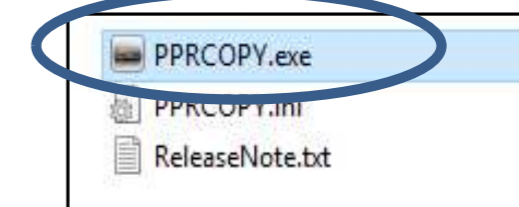
Step 2: Automatic Creation of 8 Devices in Windows

Notice:

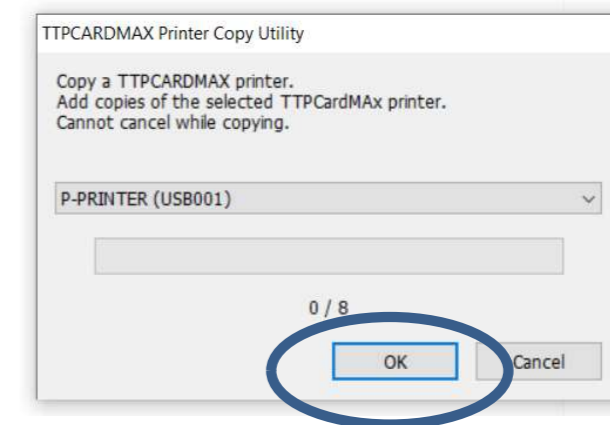
- The TTPCardMax Installation requires the creation of 8 different Printer Devices.
- The creation process is Automatic
- Copy the content of the **Usb-Stick** on the PC
- Select the sub-folder \ **TTPCardMax**
- Select the sub-folder \ **ENG**
- Select the sub folder \ **TTPCardMax COPY DRIVER ENG**



- Execute **PPRCOPY.exe**



- Press **Ok** to proceed



- Press **Ok** to Complete the Installation

Step 3: ContaprintMAX Software Installation

For Windows® 7, 8, 10 (32 and 64 bit)

Notice:

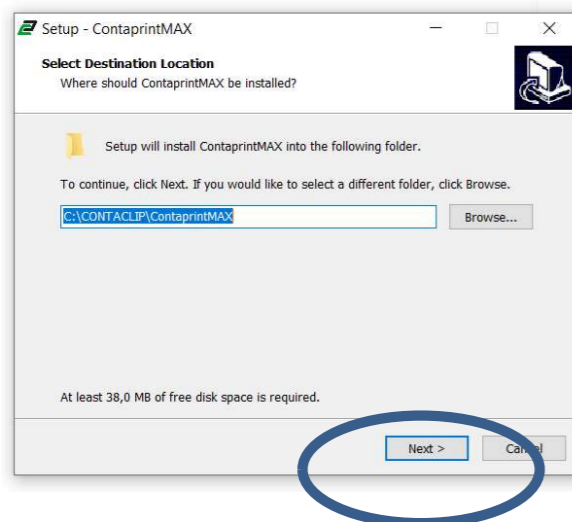
- Turn The TTPCardMAX On
- Wait until TTPCardMax is ON LINE

- Copy the content of the Usb-Stick on the PC
- Select the sub-folder \ContaprintMAX
- Select the sub-folder \ContaprintMAX-Setup-ENG

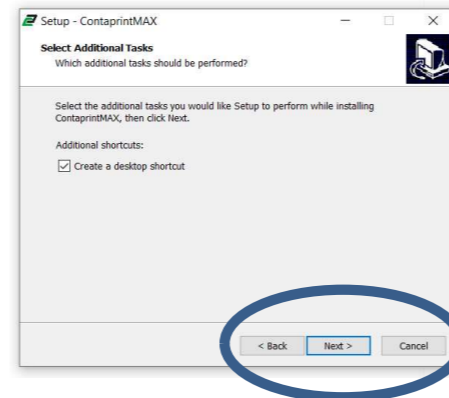


- Double-Click Double-Click to execute **ContaprintMAX-ENG.exe** Program

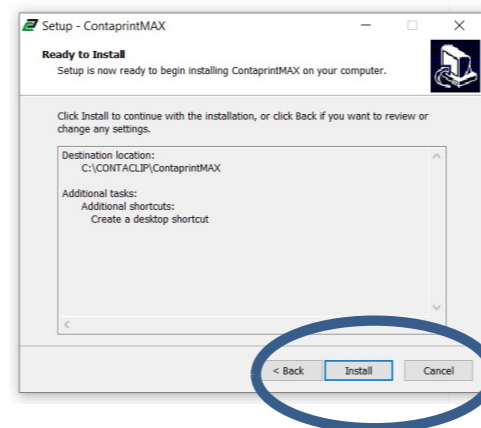
- Press **Next** to proceed.



- Press **Next** to proceed.

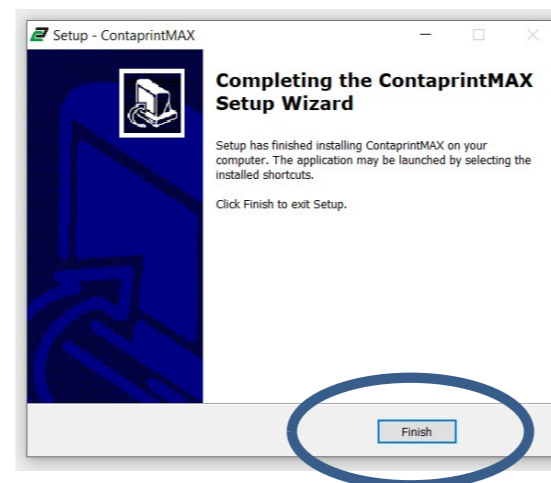


- Press **Install** to proceed.



The installation continues, it can take a few minutes.

- Press **Finish** to complete the Setup



The **ContaprintMAX** Software is installed in the default folder **c:\Contaclip\ContaprintMAX**

The **ContaprintMAX** icon appears



Step 4: Load Printer Profiles in ContaprintMAX

Notice:

- The program Setup of ContaprintMAX imports automatically the 8 TTPCardMax Printer Devices with all the correct setting parameters.

Notice:

Following Instructions are for importing and setting Printer Drivers in ContaprintMAX in case of:

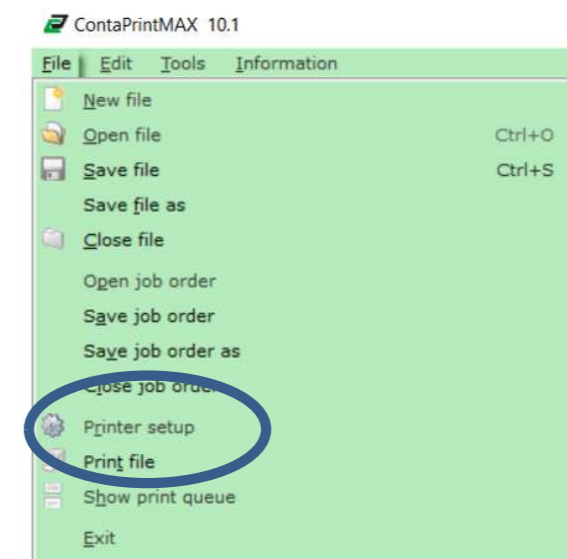
- No communication between Pc and Printer after First Installation
- Re-installation of TTPCardMAX Printer Drivers

Notice:

- Repeat the Complete Cycle for all the 8 Printer Devices

To verify the correct settings.

- Run **ContaprintMAX**.
- Select **Menu File**
- Select menu **Printer Setup**.



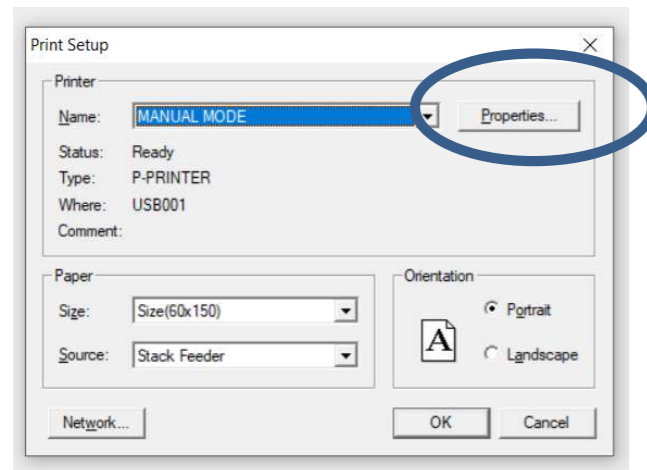
The List of the 8 TTPCardMax Printer Devices appears.

Notice:

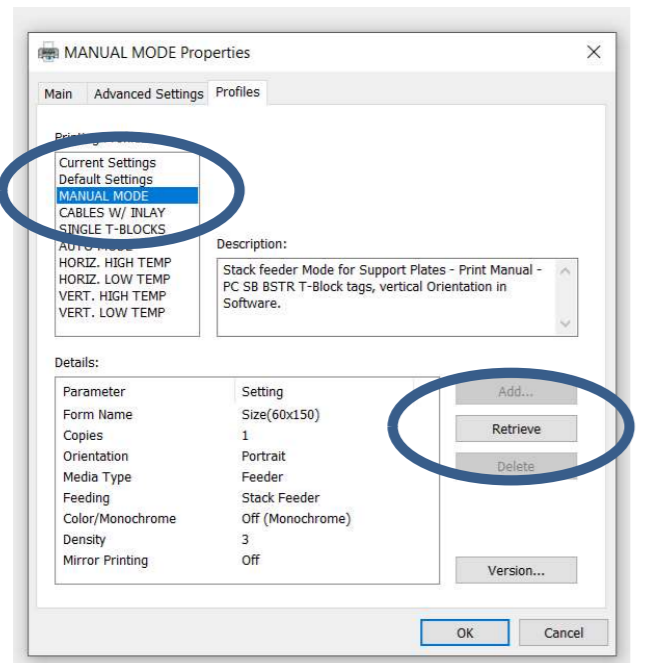
- Sample below is for «MANUAL MODE» Printer device
- Setting of “MANUAL MODE” Profile
- Press the Left button of “MANUAL MODE”



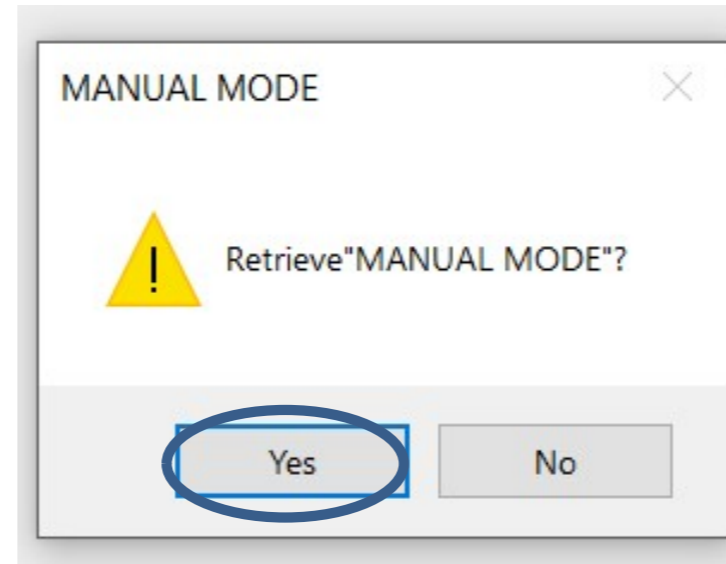
- Press **Properties**



- Select **Profiles**
- Select the Profile “MANUAL MODE”
- Select **Retrieve**



- Select **Yes** to Confirm



Notice:

- Repeat the Complete Cycle for all the 8 Printer Devices
- RETRIEVE each «Pre-Defined Profile» for each TTPCardMax Device

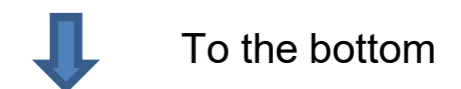
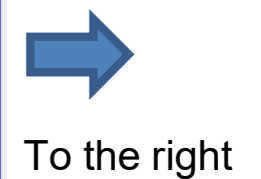
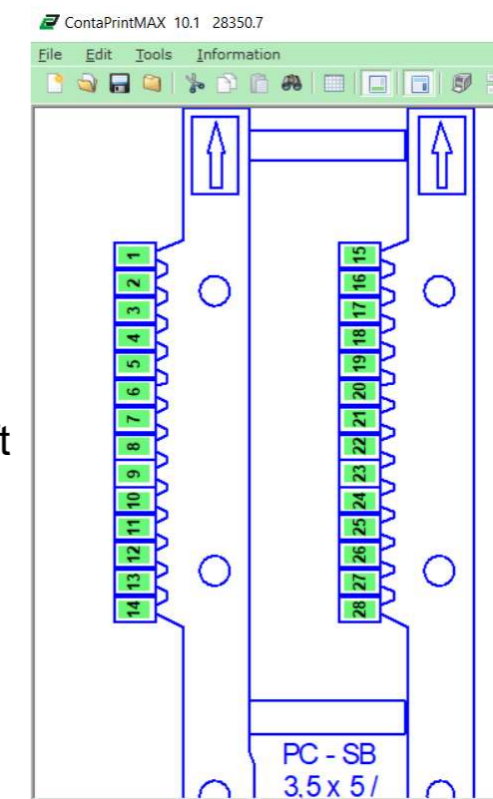
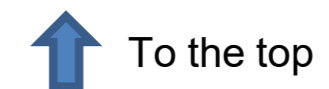
Repeat for all Printer devices

TTPCardMax Devices	Pre-Defined Profiles to RETRIEVE
MANUAL MODE	MANUAL MODE
CABLES W/ INLAY	CABLES W/ INLAY
SINGLE T-BLOCKS	SINGLE T-BLOCKS
AUTO MODE	AUTO MODE
HORIZ. HIGH TEMP	HORIZ. HIGH TEMP
HORIZ. LOW TEMP	HORIZ. LOW TEMP
VERT. HIGH TEMP	VERT. HIGH TEMP
VERT. LOW TEMP	VERT. LOW TEMP

Step 5: Printing Centering

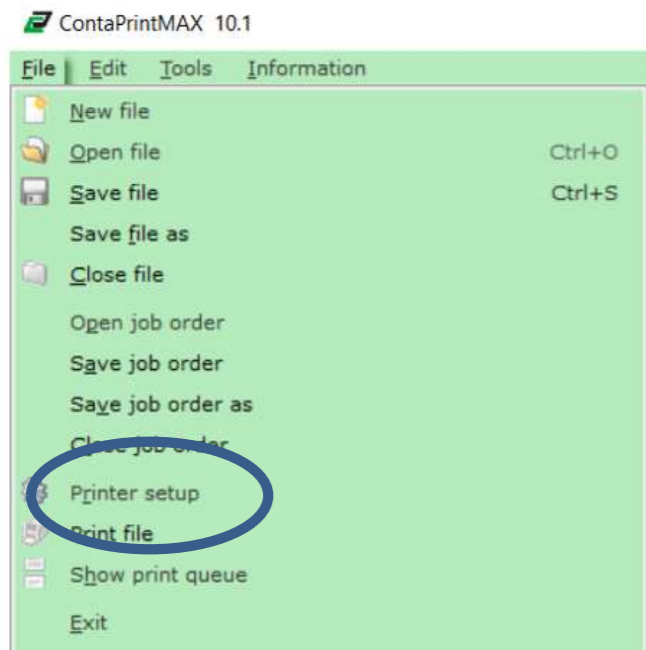
Notice:

- The centering allows you to make some corrections at the print start point.
- The coordinates (X, Y) can be modified for to move the starting point on the right, left, to the top.
- In this manual the directions Right, Left, Top, Bottom refer to ContaprintMAX Window as you see

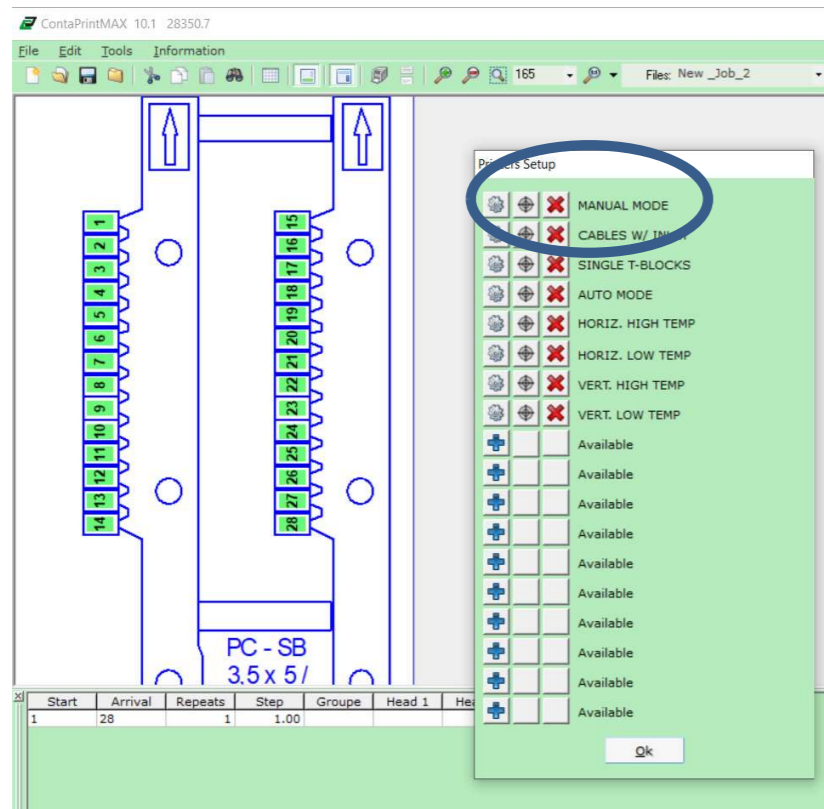


Sample refers to Cable Tags 28350.7 and the Printer Device "MANUAL MODE"

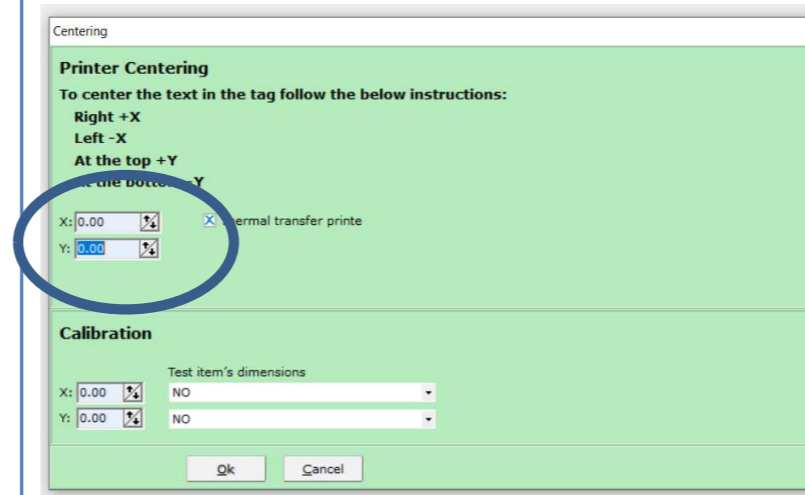
- Run **ContaprintMAX**
- Select "File" > "Printer Setup"



- Select "MANUAL MODE" Printer
- Select **Centering Button**



- Centering Window appears



- To **move** the print starting position
- Insert an Offset Value in mm:

Printing Directions	Mm with two decimal digits Corrections
To the Top	Type in a positive value for the Y axis
To the Bottom	Type in a negative value for the Y axis
To the Right	Type in a positive value for the X axis
To the Left	Type in a negative value for the X axis

Faq Printer Quality

Event	Possible cause	What to do
Media printed correctly, but not aligned	Guides not correctly positioned to guide the media	Check the guides, if necessary set the guides closer to the side of the media/support plate
Media printed very faint	Non correct driver's setting	Reload the printer profile
Media printed very smudged	Non correct driver's setting	Reload the printer profile
Media printed with some punctual defects	Surface of the media is dirty	Check that the surface of the media is not dirty, if necessary clean with alcohol
Media printed with punctual defects	Cleaning roller dirty	Run the cleaning function (Online->Menu-->Cleaning)

Correct Use

Event	What to do
JAMMED PLATE REMOVING THE ITEM WITH STRENGHT OR NOT USING THE 'REMOVE' FUNCTION MIGHT DAMAGE WITH NO SOLUTION THE HEAD PRINT.	Utilize only the "MENU – REMOVE" function to eject the item from the printer. Press "ONLINE" and then "MENU" With the right arrow select "REMOVE" and press the right or left arrow to eject the item
ABORT A PRINT WHEN TURNING PRINTER ON AND READ "Now receiving" from a preceding print	To abort a print and cancel print data, press Cancel at least for three seconds straight before the printer has started to print.

Troubleshooting

Event	Possible cause	What to do
Printer does not react	Printer is not On Line	Check Power supply is On Check On Line Led is On
Printer is turned on but does not react	PC connection faulty	Check the PC <--> printer connection
Printer is turned on but does not react	PC – Printer communication faulty	Reload printer profile

Error Messages on Lcd Printer Panel

Event	Possible cause	What to do
The Cover is Open Error 02	Printer's frontal cover not correctly closed	Open the cover and close it carefully, until the end
No Ribbon	Ribbon cartridge empty or not positioned correctly	Check the ribbon cartridge, if empty substitute, if cut repair
Set Ribbon	Ribbon cartridge not correctly positioned	Open the cover, remove and insert again the cartridge, until it is not correctly positioned
No Clening tape	Cleaning tape not present or empty	Check the cleaning cassette, if needed substitute
Set a new media	No Media in the printer	Insert a new media
Remove media and set it again	Media not correctly feeded into the printer	Remove the media, when you read "set a new media", insert it again until you hear the "bip"
Media feed Error	Media jam	Remove all the media, press Cancel, when displayed "set a new media", insert media again until you hear the "bip"
Check feeder Type	Wrong support plate	Substitute the support plate with the right one for the media you are printing.
Check Media and Press enter	No media on the support plate / feeder empty	Fill the right media in the feeder, then press Enter