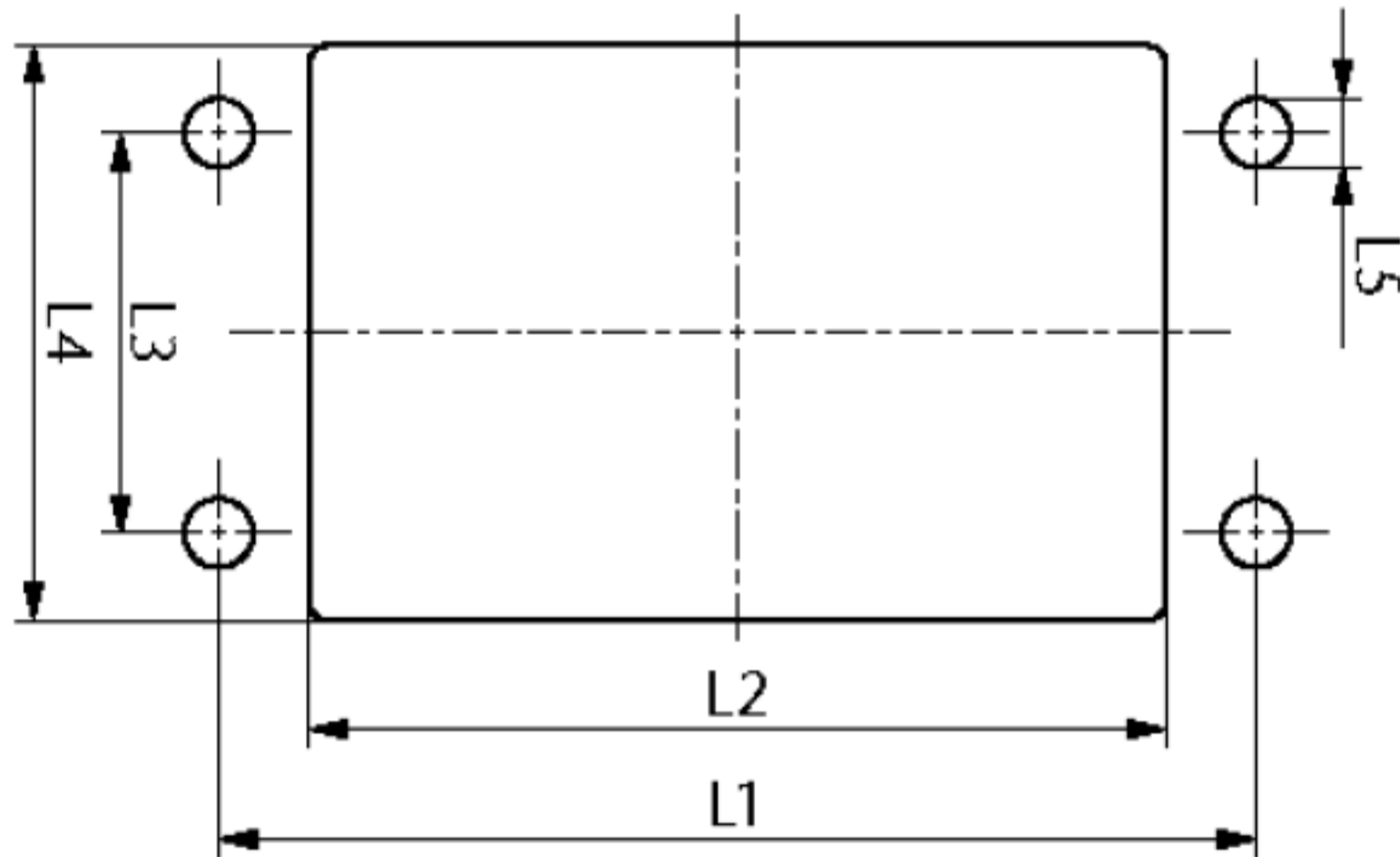


CONTA-CABLE/ KDS-SR CABLE ENTRIES



EN DE

PRODUCT DATA



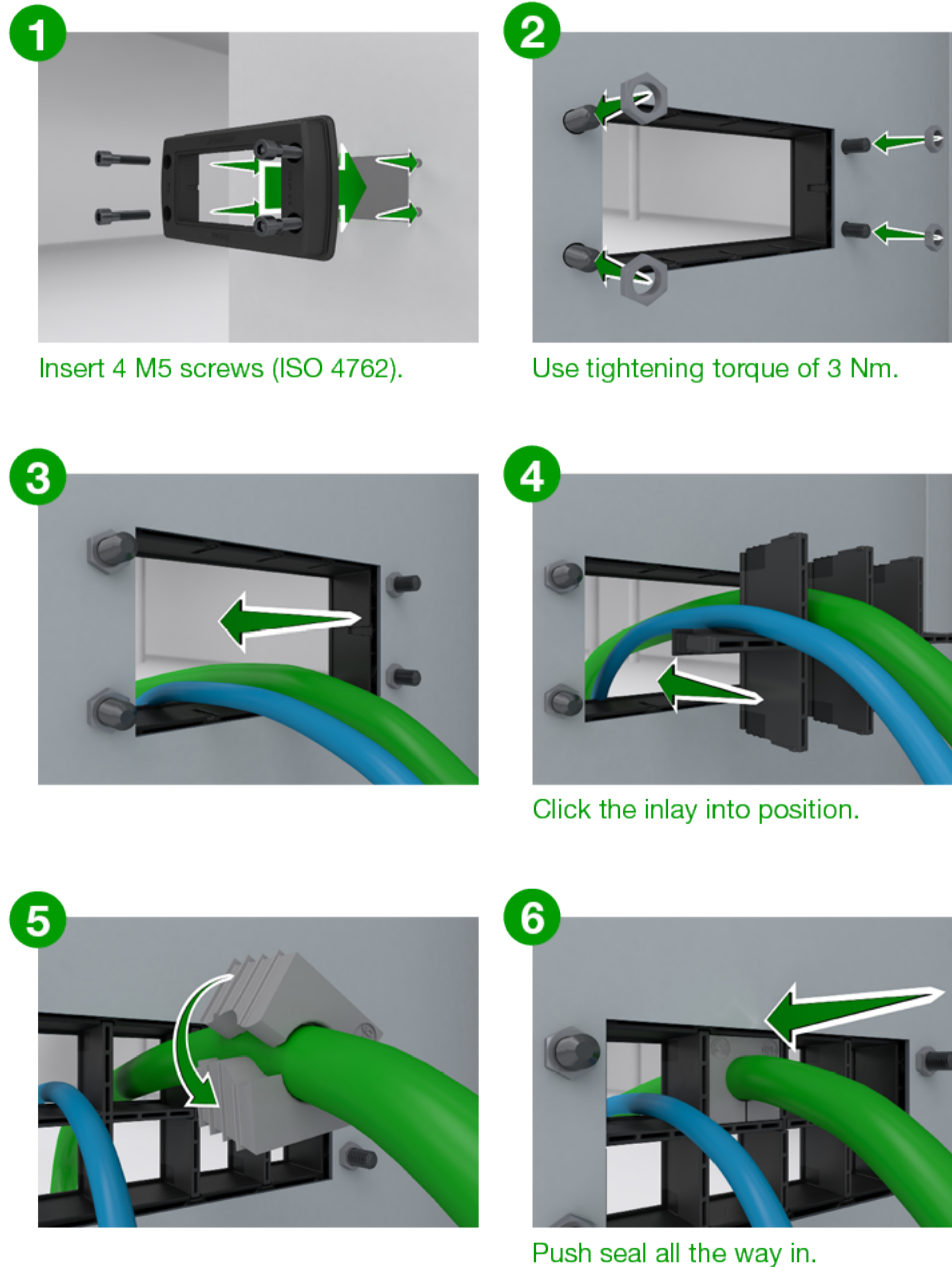
CUT OUT DIMENSIONS

Frame	Cat.no.	L1(mm)	L2(mm)	L3(mm)	L4(mm)	L5(mm)
KDS-SR 1/4	28506.4	58	46	32	46	5.5
KDS-SR 6/10	28500.4	83	68.5	32	46	5.5
KDS-SR 8/16	28502.4	103	91	32	46	5.5
KDS-SR 10/24	28504.4	130	113.5	32	46	5.5

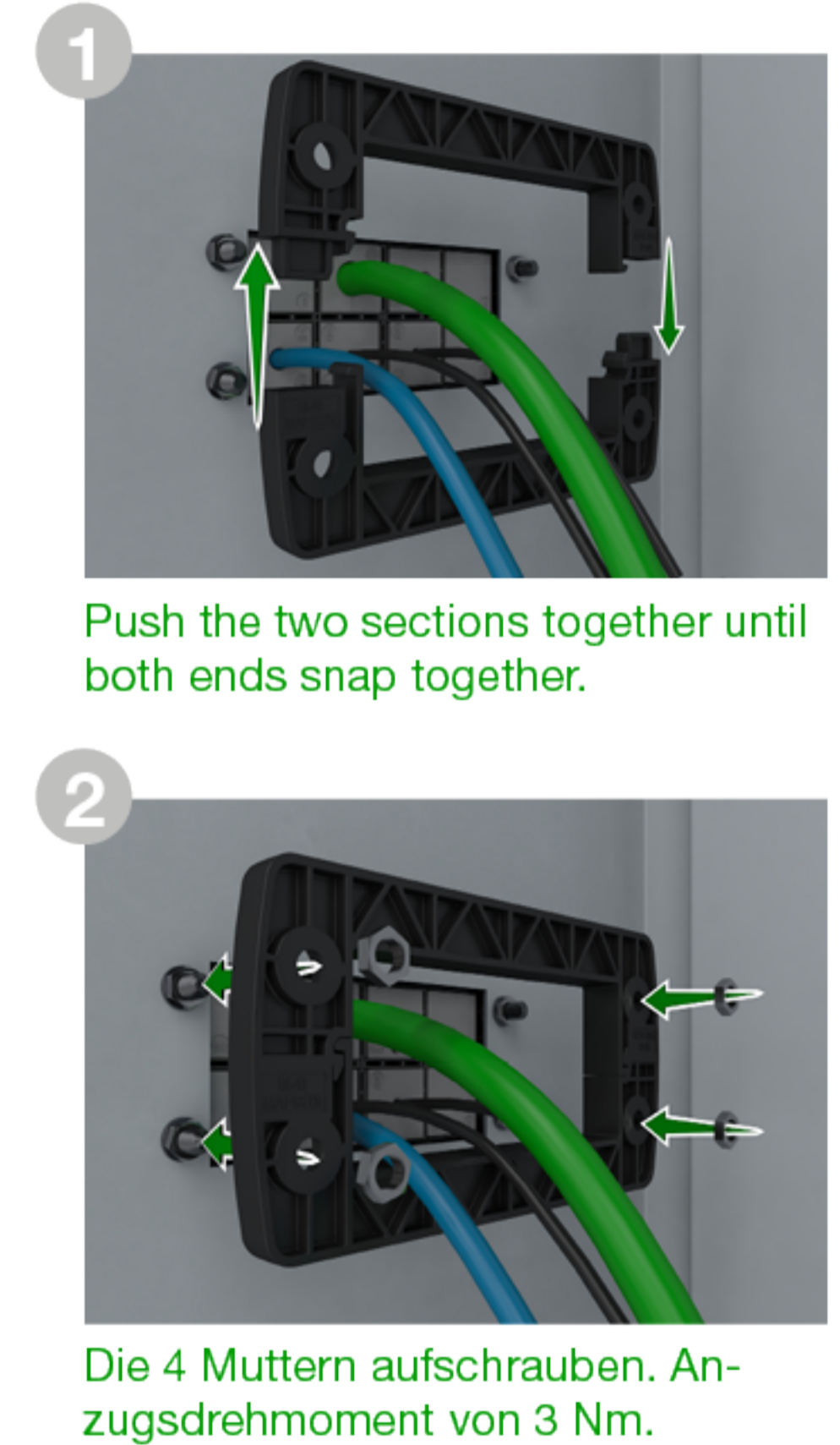
COMBINATION OPTIONS

Frame	Inlay			
	1 28516.4	2 28517.4	4 28518.4	6 28519.4
KDS-SR 1/4	x	x	x	
KDS-SR 6/10	x	x	x	x
KDS-SR 8/16	x	x	x	x
KDS-SR 10/24	x	x	x	x

INSTALLATION



OPTIONAL: LOCKING FRAME



According to UL Standard 508A (File E489821), the following Conditions of Acceptability apply:



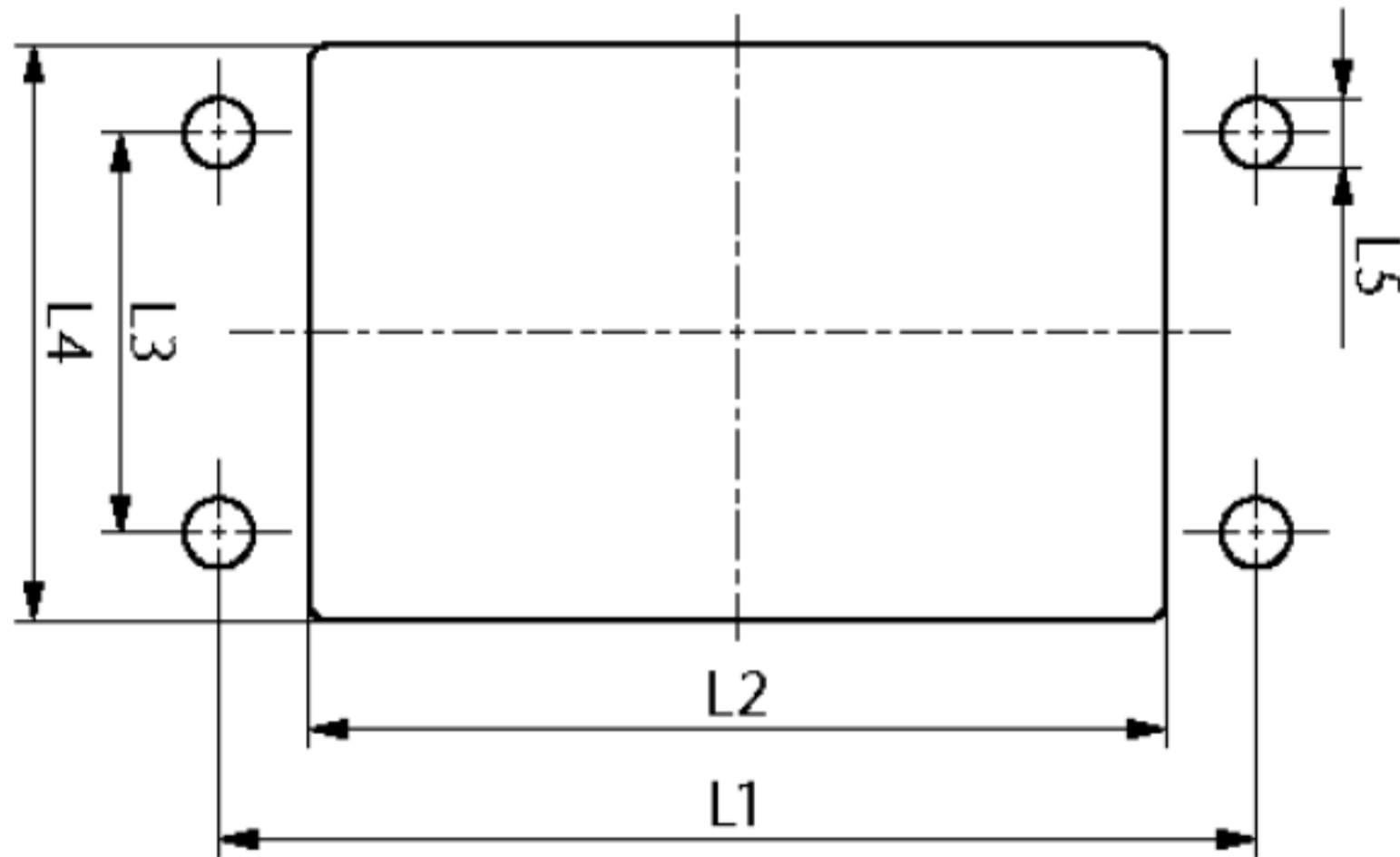
- Use M5 screws of stainless steel (AISI type 304 or 316)
- Max. end-use temperature for UL application is 50°C
- Max. temperature range: -40°C to +120°C (static)

CONTA-CABLE/ KDS-SR KABELINFÜHRUNGEN



EN DE

PRODUKTDATEN



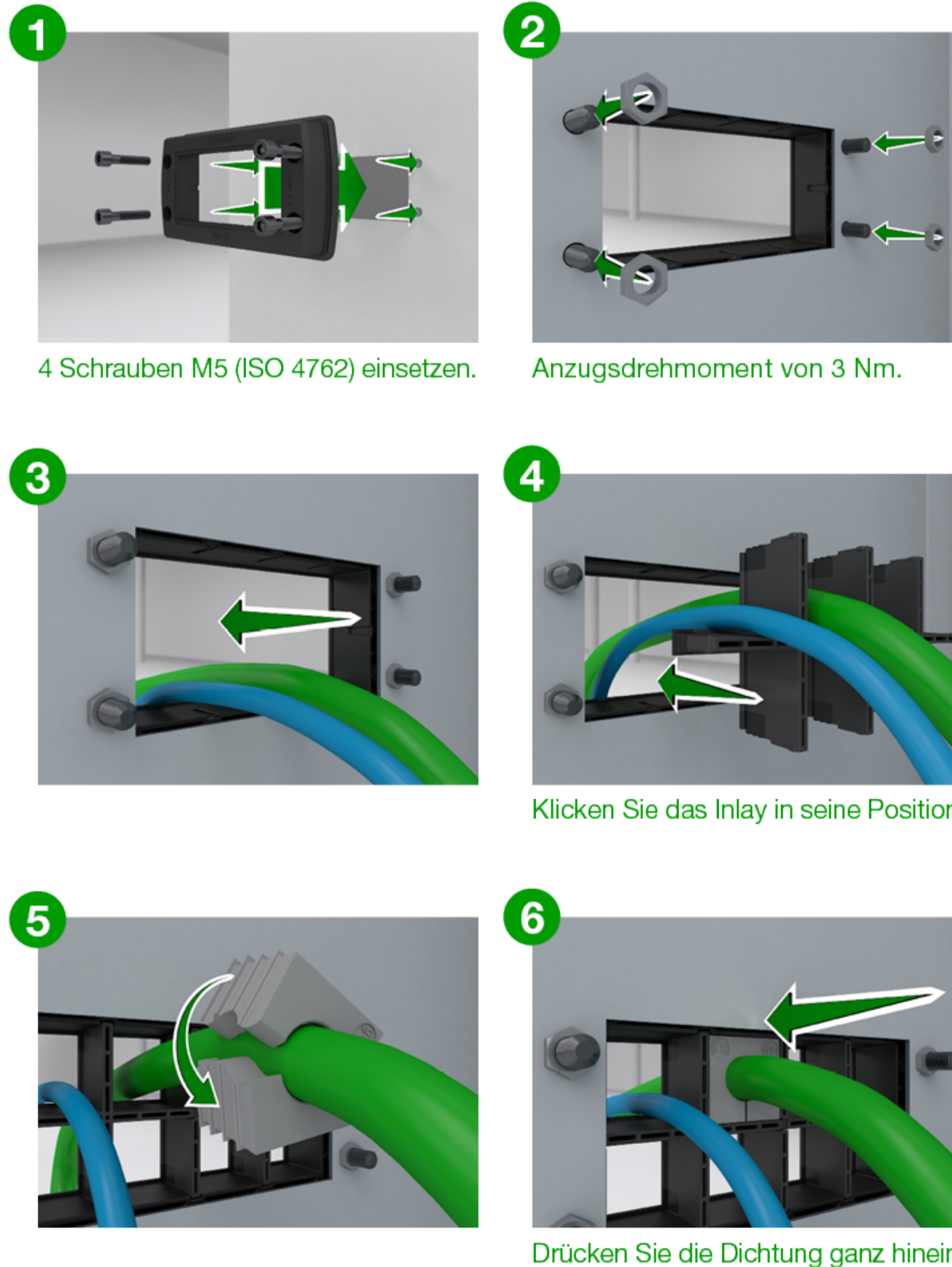
ABMESSUNGEN MONTAGEAUSSCHNITTE

Rahmen	Kat.-Nr.	L1(mm)	L2(mm)	L3(mm)	L4(mm)	L5(mm)
KDS-SR 1/4	28506.4	58	46	32	46	5,5
KDS-SR 6/10	28500.4	83	68,5	32	46	5,5
KDS-SR 8/16	28502.4	103	91	32	46	5,5
KDS-SR 10/24	28504.4	130	113,5	32	46	5,5

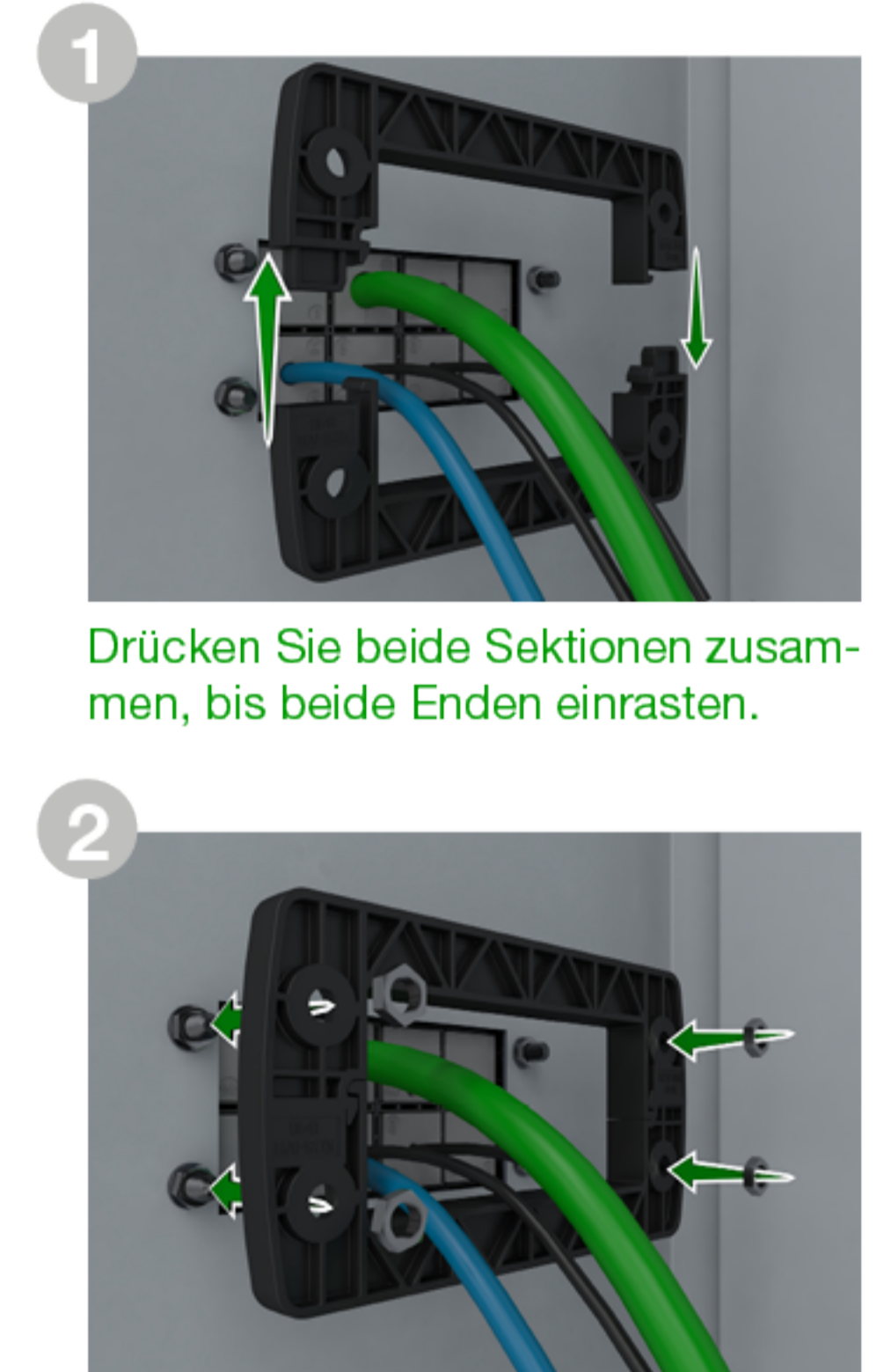
KOMBINATIONSMÖGLICHKEITEN

Rahmen	Inlay			
	1 28516.4	2 28517.4	4 28518.4	6 28519.4
KDS-SR 1/4	x	x	x	
KDS-SR 6/10	x	x	x	x
KDS-SR 8/16	x	x	x	x
KDS-SR 10/24	x	x	x	x

INSTALLATION



OPTIONAL: VERRIEGELUNGSRAHMEN



Gemäß UL-Standard 508A (File E489821) gelten die folgenden Akzeptanzbedingungen:

- Verwenden Sie M5-Schrauben aus rostfreiem Stahl (AISI Typ 304 oder 316)
- Die maximale Endanwendungstemperatur für die UL-Anwendung beträgt 50°C
- Max. Temperaturbereich: -40°C bis +120°C (statisch)

