

# For handling all types of print

The TTPCardMAX printing system for outstanding print quality that satisfies all marking requirements.





# Contents

Intelligent solutions for tomorrow	3
<b>TTPCardMAX</b> – Advantages	4
<b>TTPCardMAX</b> – Features	6
<b>TTPCardMAX</b> – Technical data	8
Inlays in-feed plates	9
Terminal markers	10
Wire and cable markers	12
Device and installation markers	18

# Because the future needs intelligent solutions

**Inside the smartest workflows:** being at the heart of every smart connection, the driving force for improved workflows and productivity – that is our global commitment. That is why we are developing and manufacturing products for almost all industrial sectors. Whether it's mechanical and facility engineering, traffic and process engineering, clean room technology or renewable energy: in all these industries we are the perfect partner and expert in electrical and electronic connection technology.

In addition to developing and creating new products, we invest in modern, efficient manufacturing processes. Ensuring the highest quality is our top priority. Our top-class products are supported by this interplay between our top-class personnel and machinery. And our services are just as outstanding as our products. Your wishes and requirements are what motivate our customised solutions.

## **Living sustainably and taking responsibility**

At CONTA-CLIP, we focus our thoughts and actions to successfully implement our ecological, economic and social goals.

We promote economic sustainability in the form of healthy growth, together with financial strength and consistent reinvestment within the company. Our stable management, low staff turnover and employees involved in decision-making processes all provide a guarantee for social sustainability.

Our actions are also ecologically sustainable throughout the entire value chain. This is reflected in the selection of our materials and our use of energy within the company. We work with materials that contain no hazardous substances and support regenerative heat recovery. This enables us to take responsibility for future generations.



# Printing system **TTPCardMAX**

The TTPCardMAX printing system efficiently and quickly creates highly visible and permanent marking for terminal blocks, cables and wires, devices, ducts, input/output devices, external control panels, and many other components.

TTPCardMAX provides considerable advantages over conventional marking systems such as: versatility, clear print quality, user-friendly, and automatic or manual high-speed printing.

It requires minimal maintenance such that it is dedicated to performance, precision and reliability for maximum up-time.

Gone are the days of relying on multiple printers! The TTPCardMAX printing system optimises your workflow's efficiency and productivity.



## The advantages



### Versatile

The TTPCardMAX printing system can print on many different materials; this enables simple and versatile marking of labels and tags for terminal blocks, cables, wires, devices, ducts, input/output devices and external control panels.



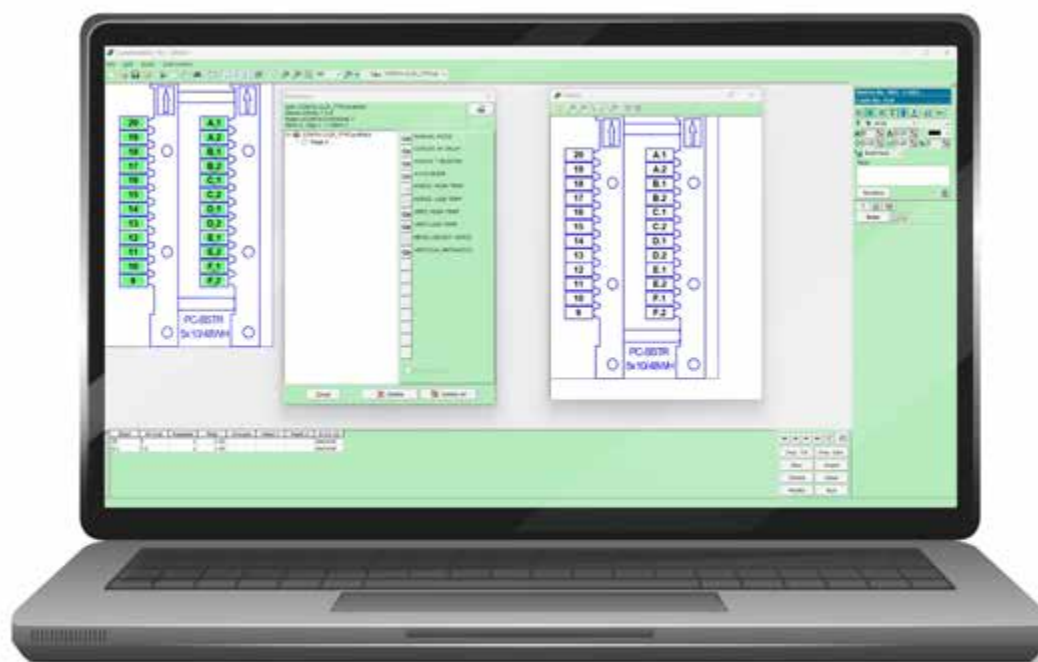
### High print quality

The thermal transfer technology delivers consistently high resolution printing at 300 dpi for maximum print area sizes of 80 x 500 mm covering and exceeding most popular label formats.



### High printing speed

The automatic in-feed of marker cards enables printing of up to 5,500 markers per hour at print speeds of up to 60 mm/s.



EASY

## Easy to use

The printing software is tailored to the marker cards with templates for all materials. This simplifies operations. The printing system can be used in a manual, semi-automatic and fully automatic modes tailored to each label, while ensuring speedy work-flows.



## Minimal maintenance

An easily accessible printing/in-feed area with ink ribbon cassettes, and a special cleaning cassette maintains the printer chamber and print head free of debris.



## Compact

The printing system features a compact design (25 cm height) so that it can be set up even in confined spaces.

# TTPCardMAX – one printing system for all your marking needs

CONTA-CLIP's TTPCardMAX thermal transfer printer is a high quality printing system for printing on a wide range of materials. It is easy to use, requires little maintenance and delivers excellent print quality at low cost.

## Features

### ■ Technology

The thermal transfer technology ensures high print quality and durability for a wide range of materials.

### ■ Printing materials

The printing system can print on a wide range of materials, including PVC, PMMA, polyester, ABS and polycarbonate.

### ■ Print quality

TTPCardMAX delivers excellent print quality with sharp, clear contours for labels and signs.

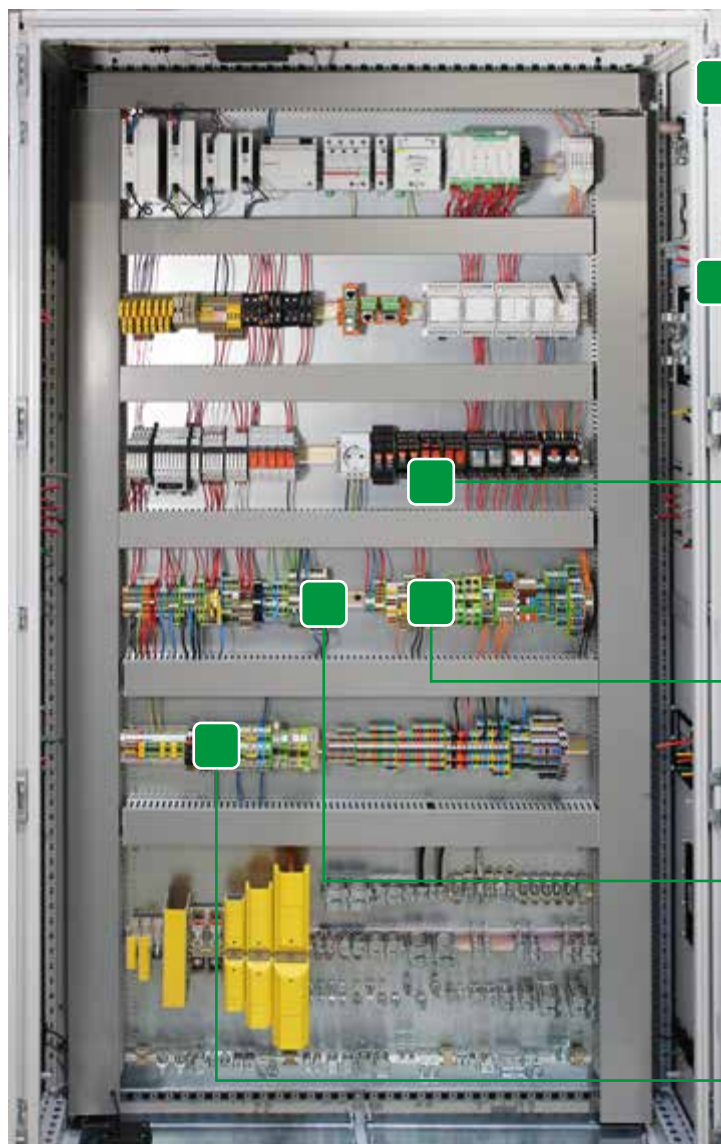
### ■ Maintenance

The system is low-maintenance and requires minimal attention.

### ■ Operability

TTPCardMAX is easy to use and has an intuitive user interface.





Installation markers and ratings plates



Push-buttons and control panels



Devices and relays



Terminal markers



Wire and cable markers



Labels



## ■ Software

The CONTAPrintMAX software enables you to easily and quickly prepare the print data. The Windows-based software has been specially developed for professional labelling of machines, installations and electrical cabinets.

## ■ Applications

Our printing system is suitable for a wide range of applications, including printing labels and signs for terminal blocks, cables and wires, devices, ducts, input/output devices, external control panels or other applications.

CONTA-CLIPS's TTPCardMAX is an excellent choice for companies looking for a high-quality and user-friendly marking system.

# Printing system TTPCardMAX

The thermal transfer printing system for marking labels and tags for terminal blocks, cables, wires, devices, ducts, input/output devices and external control panels.

## TTPCardMAX



Size (L x W x H)	423 x 240 x 208 mm
Weight	9.5 kg
<b>Type</b>	<b>TTPCardMAX</b>
<i>Cat. no.</i>	<i>33000.0</i>
<b>Included in delivery</b>	<b>1</b>
CCI-S TBBSTR001	Thermal transfer printer TTPCardMAX, power cable EU, (for a US power cord use order#880083.0), USB 2.0 cable, Cleaning ribbon (Cat No. 33618.0), Ink Ribbon Black (Cat No. 33619.0)
CCI-S SI2K0017	Inlay for single operation, terminal markers SB BSTR series, CONTA-CLIP (Cat No. 33001.0)
CCI-M EVOPL0021	Inlay for single operation, terminal markers SI2KTB series, universal (Cat No. 33018.0)
Software	Inlay for manual operations, cable markers SI2K02W/10N-18N series (Cat No. 33010.0)
<b>Technical data</b>	CONTAPrintMAX: available for download at <a href="http://www.conta-clip.com">www.conta-clip.com</a>
Printing process	Thermal transfer
Operating modes	automatic, semi-automatic, manual in-feed
Print resolution	300 dpi
Printing speed	up to 60 mm/sec.
Interface	USB 2.0
Operating voltage	100 V to 240 V AC, 50/60 Hz
Power consumption	max. 135 W
Fonts	Windows True Type
Graphic formats	.gif, .jpg, .jpeg, .bmp, .wmf, .png
<b>Accessories</b>	
<i>Cat. no.</i>	<i>33002.0</i>
<b>Included in delivery</b>	<b>1</b>
<b>Base for printing system</b>	<b>TTPCardMAX automatic kit</b>
<i>Cat. no.</i>	<i>33614.0</i>
<b>Black ink ribbon, 130 m</b>	<b>TTPCardMAX automatic magazine (Cat No. 33626.0), TTPCardMAX support base (Cat No. 33614.0), CCI-A SI2K0014NP1 Inlay for automatic operations, cable markers SI2K02W/10N-30N series (Cat No. 33003.0)</b>
<i>Cat. no.</i>	<i>33619.0</i>
<b>Cleaning ribbon, 8 m</b>	<b>TTPCardMAX support base</b>
<i>Cat. no.</i>	<i>33618.0</i>
<b>Cleaning roller, Ø 18 mm</b>	<b>TTPCardMAX ink ribbon BK</b>
<i>Cat. no.</i>	<i>33615.0</i>
<b>Included in delivery</b>	<b>1</b>



33002.0  
Automatic kit, includes magazine for automatic operations, support base, and Inlay for automatic operation of cable marker SI2K02W/10N-30N



33614.0  
Support base



33619.0  
Ink ribbon BK



33618.0  
Cleaning ribbon, 8 m



33615.0  
Cleaning roller, Ø 18 mm



Inlays in-feed plates for TTPCardMAX

Cat. no.	Type	Description	Qty.
33001.0	CCI-S TBBSTR001	Inlay for single operations, terminal markers SB BSTR series, CONTA-CLIP	1
33003.0	CCI-A SI2K0014NP1	Inlay for automatic operations, cable markers SI2K02W/10N-30N series	1
33004.0	CCI-A SI2K0014NP3	Inlay for automatic operations, wire markers SI2KTM series	1
33005.0	CCI-A SI2K0014NP7	Inlay for automatic operations, relay markers SI2KAF35GW series, ABB, Siemens	1
33006.0	CCI-A SI2K0014NP2	Inlay for automatic operations, terminal markers SI2KAF5010CW series, Phoenix, Wago	1
33007.0	CCI-A SI2K0014NP4	Inlay for automatic operations, terminal markers SI2KAF5 series, CONTA-CLIP, Weidmüller, Wago	1
33008.0	CCI-A SI2K0014NP5	Inlay for automatic operations, terminal markers SI2KAF6010BW series, Cabur	1
33009.0	CCI-A SI2K0014NP6	Inlay for automatic operations, terminal markers SI2KAF5 series, Tyco	1
33010.0	CCI-M EVOPL0021	Inlay for manual operations, cable markers SI2K02W/10N-18N series	1
33011.0	CCI-M EVOPL0023	Inlay for manual operations, cable markers SI2K02W/30 series	1
33012.0	CCI-M EVOPL0025	Inlay for manual operations, wire markers SI2KTM series	1
33013.0	CCI-M EVOPL0024	Inlay for manual operations, relay markers SI2KAF35GW Series, ABB, Siemens	1
33014.0	CCI-M EVOPL0027	Inlay for manual operations, terminal markers SI2KAF5010CW series, Phoenix, Wago	1
33015.0	CCI-M EVOPL0028	Inlay for manual operations, terminal markers SI2KAF5 series, CONTA-CLIP, Weidmüller, Wago	1
33016.0	CCI-M EVOPL0029	Inlay for manual operations, terminal markers SI2KAF6010BW series, Cabur	1
33017.0	CCI-M EVOPL0026	Inlay for manual operations, terminal markers SI2KAF5 series, Tyco	1
33018.0	CCI-S SI2K0017	Inlay for single operations, terminal markers SI2KTB series, universal	1
33019.0	CCI-M EVOPLM01	Inlay for manual operations, installation markers EVO series	1
33020.0	CCI-M EVOPLMTM	Inlay for manual operations, wire markers SI2KTM series	1
33610.0	CCI-M EVOPLMTB	Inlay for manual operations, terminal markers SI2KTB series	1
33611.0	CCI-M EVOPLMAF01	Inlay for manual operations, terminal markers SI2KAF5010CUMD series	1
33612.0	CCI-M EVOPLMAF02	Inlay for manual operations, terminal markers SI2KAF5 series	1
33613.0	CCI-M EVOPLMAF03	Inlay for manual operations, terminal markers SI2KAF6010BUMD series	1
33617.0	TTPCardMAX Adapter plate 30 mm	Adapter plate for automatic operations, cable markers SI2K02W/30N series	1
33646.0	CCI-A TBBSTR002	Inlay for automatic operations, terminal markers SB and BSTR series, CONTA-CLIP	1
33647.0	CCI-A TBBSTR003	Inlay for automatic operations, terminal markers BSTR SF series, CONTA-CLIP	1
33648.0	CCI-A TBSB75004	Inlay for automatic operations, terminal markers SB 7,5 series, CONTA-CLIP	1



# Terminal markers

## Marker cards for terminal blocks PC, automatic in-feed

Characteristics	
Marker material	Polycarbonate, halogen-free
Flamm. class acc. to UL 94	V-0
Temperature range	- 40 °C to + 130 °C
Mounting	Snap-on with mounting feet
Additional colours available upon request	● ● ● ● ● ●



Cat. no.	Type	Dimensions L x W, mm	Pitch	Colour	Markers/ Card	Qty.	Compatibility	Inlay
33635.7	PC/HF-SB 3,5x5/63 WH	3.5 x 5	3.5	White	63	1386	CONTA-CLIP, Weidmüller	33646.0
33636.7	PC/HF-SB 5x5/45 WH	5 x 5	5.1	White	45	990	CONTA-CLIP, Weidmüller	33646.0
33637.7	PC/HF-SB 6x5/36 WH	6 x 5	6.1	White	36	792	CONTA-CLIP, Weidmüller	33646.0
33638.7	PC/HF-SB 7.5x4/60 WH	7.5 x 4	7.5	White	60	1320	CONTA-CLIP, Transformer terminals general	33648.0
33639.7	PC/HF-SB 8x5/45 WH	8 x 5	8.1	White	27	594	CONTA-CLIP, Weidmüller	33646.0
33640.7	PC/HF-BSTR 5x10/45 SF WH	5 x 10	5.1	White	45	990	CONTA-CLIP, Weidmüller	33647.0
33641.7	PC/HF-BSTR 5x12/45 WH	5 x 12	5.1	White	45	990	CONTA-CLIP, Weidmüller	33646.0
33642.7	PC/HF-BSTR 6x10/36 SF WH	6 x 10	6.1	White	36	792	CONTA-CLIP, Weidmüller	33647.0
33643.7	PC/HF-BSTR 6x12/36 WH	6 x 12	6.1	White	36	792	CONTA-CLIP, Weidmüller	33646.0
33644.7	PC/HF-BSTR 8x12/27 WH	8 x 12	8.1	White	27	594	CONTA-CLIP, Weidmüller	33646.0
33645.7	PC/HF-BSTR 10x12/21 WH	10 x 12	10.1	White	21	462	CONTA-CLIP, Weidmüller	33646.0
33609.7	PC/HF-SI2KAF5075LW WH	7.5 x 5	5	White	48	1056	CONTA-CLIP, Weidmüller, Wago	33007.0
33082.7	PC/HF-SI2KAF5010LWK WH	10 x 5	5	White	48	1056	CONTA-CLIP, Weidmüller, Wago	33007.0
33083.7	PC/HF-SI2KAF5010C WH	10 x 5	5	White	48	1056	Phoenix, Wago, Tyco	33006.0
33084.7	PC/HF-SI2KAF5010R WH	10 x 5	5	White	48	1056	Tyco	33009.0
33086.7	PC/HF-SI2KAF5210N WH	10 x 5	5.2	White	48	1056	Wago	33007.0
33088.7	PC/HF-SI2KAF6010B WH	10 x 5	6	White	39	858	Cabur	33008.0
33090.7	PC/HF-SI2KAF6010R WH	10 x 6	6	White	39	858	Tyco	33009.0

## Marker cards for terminal blocks PC, manual in-feed

Characteristics	
Marker material	Polycarbonate, halogen-free
Flamm. class acc. to UL 94	V-0
Temperature range	- 40 °C to + 130 °C
Mounting	Snap-on with mounting feet
Additional colours available upon request	● ● ● ● ● ●



Cat. no.	Type	Dimensions L x W, mm	Pitch	Colour	Markers/ Card	Qty.	Compatibility	Inlay
28342.7	PC-SB 5X5/48 WH	5 x 5	5.1	White	48	960	CONTA-CLIP, Weidmüller	33001.0
28343.7	PC-SB 6X5/40 WH	6 x 5	6.1	White	40	800	CONTA-CLIP, Weidmüller	33001.0
28350.7	PC-SB 3.5X5/56 WH	3 x 5	3.5	White	56	1120	CONTA-CLIP, Weidmüller	33001.0
28357.7	PC-SB 7.5X5/32 WH	7.5 x 4	7.5	White	32	640	CONTA-CLIP, Weidmüller	33001.0
28344.7	PC-BSTR 6X12/40 WH	6 x 12	6.1	White	48	960	CONTA-CLIP, Weidmüller	33001.0
28345.7	PC-BSTR 5X12/48 WH	5 x 12	5.1	White	48	960	CONTA-CLIP, Weidmüller	33001.0
28346.7	PC-BSTR 5X10/48 WH	5 x 10	5.1	White	48	960	CONTA-CLIP, Weidmüller	33001.0
28352.7	PC-BSTR 5X10/48 MI WH	5 x 10	5.1	White	48	960	CONTA-CLIP, Weidmüller	33001.0
33051.7	PC/HF-SI2KTBS10L WH	10 x 3	3.5	White	45	900	CONTA-CLIP, Weidmüller, Wago	33018.0
33052.7	PC/HF-SI2KTBS10LWK WH	10 x 3	3.5	White	45	900	CONTA-CLIP, Weidmüller, Wago	33018.0
33057.7	PC/HF-SI2KTBS010L WH	10 x 5	5.1	White	45	900	CONTA-CLIP, Weidmüller, Wago	33018.0
33058.7	PC/HF-SI2KTBS010LWK WH	10 x 5	5.1	White	45	900	CONTA-CLIP, Weidmüller, Wago	33018.0
33063.7	PC/HF-SI2KTBS210C WH	10 x 5	5.2	White	27	540	Phoenix, Wago, Tyco	33018.0
33065.7	PC/HF-SI2KTBS209E WH	9 x 5	5.2	White	27	540	Phoenix	33018.0



Scan the QR code and get more information



# Wire and cable markers

## Wire markers for cable sleeves PC, automatic in-feed

Characteristics	
Marker material	Polycarbonate, halogen-free
Flamm. class acc. to UL 94	V-0
Temperature range	- 40 °C to + 130 °C
Mounting	Cable marker sleeve
Additional colours available upon request	● ● ● ● ● ●

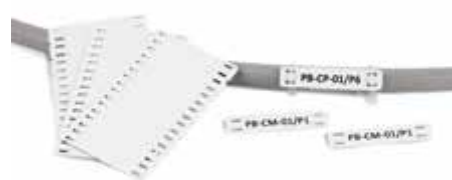


Cat. no.	Type	Dimensions L x W, mm	Colour	Markers/ Card	Qty.	Compatibility	Inlay
33536.7	PC/HF-SI2K02W/10N WH	10 x 4	White	36	3600	Cable marker sleeves KH 20x/10 and KHZ 20x/10	33003.0
33539.7	PC/HF-SI2K02W/12N WH	12 x 4	White	30	3000	Cable marker sleeves KH 20x/12 and KHZ 20x/12	33003.0
33542.7	PC/HF-SI2K02W/15N WH	15 x 4	White	24	2400	Cable marker sleeves KH 20x/15 and KHZ 20x/15	33003.0
33545.7	PC/HF-SI2K02W/18N WH	18 x 4	White	18	1800	Cable marker sleeves KH 20x/18 and KHZ 20x/18	33003.0
33548.7	PC/HF-SI2K02W/30N WH	30 x 4	White	10	2000	Cable marker sleeves KH 20x/30 and KHZ 20x/30	33003.0 33617.0*

\*33617.0 Plate adapter for tags 30 mm

## Cable markers for cable ties PC, direct in-feed

Characteristics	
Marker material	Polycarbonate, halogen-free
Flamm. class acc. to UL 94	V-0, V-2
Temperature range	- 40 °C to + 130 °C
Mounting	Cable tie
Additional colours available upon request	● ● ● ● ● ●



Cat. no.	Type	Dimensions L x W, mm	Colour	Markers/ Card	Qty.	Compatibility	Inlay
33572.7	PC/HF-SI2K030 WH	54 x 11	White	8	200	Cable markers for cable ties	No
33572.8	PC/HF-SI2K030 YE	54 x 11	Yellow	8	200	Cable markers for cable ties	No

## Cable markers for cable ties PVC, direct in-feed

Characteristics	
Marker material	Polyvinyl chloride PVC
Flamm. class acc. to UL 94	V-0
Temperature range	- 10 °C to + 50 °C
Mounting	Cable tie
Additional colours available upon request	● ● ● ● ● ●



Cat. no.	Type	Dimensions L x W, mm	Colour	Markers/ Card	Qty.	Compatibility	Inlay
33596.7	PC/HF-EVOHFCT0924 WH	24 x 9	White	21	231	Cable markers for cable ties	No
33599.7	PVC/HF-EVOHFCT2525 WH	25 x 25	White	16	352	Cable markers for cable ties	No
33600.7	PVC/HF-EVOHFCT2560 WH	25 x 60	White	6	132	Cable markers for cable ties	No
33603.7	PVC/HF-EVOHFCT2570 WH	25 x 70	White	6	132	Cable markers for cable ties	No
33606.7	PVC/HF-EVOHFCT2580 WH	25 x 80	White	4	52	Cable markers for cable ties	No



Scan the QR code and get more information

## Wire markers for cable sleeves PVC, direct in-feed



Characteristics	
Marker material	Polyvinyl chloride PVC
Flamm. class acc. to UL 94	V-0
Temperature range	- 10 °C to + 50 °C
Mounting	Cable marker sleeve
Additional colours available upon request	● ● ● ● ●

Cat. no.	Type	Dimensions L x W, mm	Colour	Markers/ Card	Qty.	Compatibility	Inlay
33550.7	PVC-EVOCT10WN WH	10 x 4	White	108	4320	Cable marker sleeves KH 50x/10	No
33550.8	PVC-EVOCT10WN YE	10 x 4	Yellow	108	4320	Cable marker sleeves KH 50x/10	No
33551.7	PVC-EVOCT12WN WH	12 x 4	White	90	3600	Cable marker sleeves KH 50x/12	No
33551.8	PVC-EVOCT12WN YE	12 x 4	Yellow	90	3600	Cable marker sleeves KH 50x/12	No
33552.7	PVC-EVOCT15WN WH	15 x 4	White	81	3240	Cable marker sleeves KH 50x/15	No
33552.8	PVC-EVOCT15WN YE	15 x 4	Yellow	81	3240	Cable marker sleeves KH 50x/15	No
33553.7	PVC-EVOCT18WN WH	18 x 4	White	72	2880	Cable marker sleeves KH 50x/18	No
33553.8	PVC-EVOCT18WN YE	18 x 4	Yellow	72	2880	Cable marker sleeves KH 50x/18	No
33554.7	PVC-EVOCT23WN WH	23 x 4	White	63	2520	Cable marker sleeves KH 50x/23	No
33554.8	PVC-EVOCT23WN YE	23 x 4	Yellow	63	2520	Cable marker sleeves KH 50x/23	No
33555.7	PVC-EVOCT30WN WH	30 x 4	White	54	2160	Cable marker sleeves KH 50x/30	No
33555.8	PVC-EVOCT30WN YE	30 x 4	Yellow	54	2160	Cable marker sleeves KH 50x/30	No

## Vinyl wrap-around labels, direct in-feed

Characteristics	
Marker material	Vinyl
Temperature range	- 40 °C to + 100 °C
Mounting	Self-adhesive



Cat. no.	Type	Dimensions L x W, mm	Cable diameter, mm	Printed area	Colour	Labels/ Card	Qty.	Compatibility	Inlay
33562.7	VYL-EVOSL022013 WH	22 x 13	1.6–3.0	13 x 9.5	White	40	1000	Universal Self-adhesive	No
33562.8	VYL-EVOSL022013 YE	22 x 13	1.6–3.0	13 x 9.5	Yellow	40	1000	Universal Self-adhesive	No
33563.7	VYL-EVOSL027013 WH	27 x 13	2.4–4.6	13 x 9.5	White	32	800	Universal Self-adhesive	No
33563.8	VYL-EVOSL027013 YE	27 x 13	2.4–4.6	13 x 9.5	Yellow	32	800	Universal Self-adhesive	No
33564.7	VYL-EVOSL034013 WH	34 x 13	2.9–5.7	13 x 13	White	24	600	Universal Self-adhesive	No
33564.8	VYL-EVOSL034013 YE	34 x 13	2.9–5.7	13 x 13	Yellow	24	600	Universal Self-adhesive	No
33565.7	VYL-EVOSL042013 WH	42 x 13	4.2–8.2	13 x 13	White	20	500	Universal Self-adhesive	No
33565.8	VYL-EVOSL042013 YE	42 x 13	4.2–8.2	13 x 13	Yellow	20	500	Universal Self-adhesive	No
33566.7	VYL-EVOSL052020 WH	52 x 20	5.9–11.7	20 x 12	White	12	300	Universal Self-adhesive	No
33566.8	VYL-EVOSL052020 YE	52 x 20	5.9–11.7	20 x 12	Yellow	12	300	Universal Self-adhesive	No
33567.7	VYL-EVOSL107025 WH	107 x 25.5	12.5–25	25.5 x 25.5	White	4	100	Universal Self-adhesive	No
33567.8	VYL-EVOSL107025 YE	107 x 25.5	12.5–25	25.5 x 25.5	Yellow	4	100	Universal Self-adhesive	No
33568.7	VYL-EVOSL072025 WH	72 x 25.5	6.9–13.8	25.5 x 25.5	White	6	150	Universal Self-adhesive	No
33568.8	VYL-EVOSL072025 YE	72 x 25.5	6.9–13.8	25.5 x 25.5	Yellow	6	150	Universal Self-adhesive	No
33569.7	VYL-EVOSL192025 WH	192 x 25.5	22.1–44.2	25.5 x 50	White	2	50	Universal Self-adhesive	No
33569.8	VYL-EVOSL192025 YE	192 x 25.5	22.1–44.2	25.5 x 50	Yellow	2	50	Universal Self-adhesive	No
33570.7	VYL-EVOSL192050 WH	192 x 50	22.1–44.2	50 x 50	White	1	25	Universal Self-adhesive	No
33570.8	VYL-EVOSL192050 YE	192 x 50	22.1–44.2	50 x 50	Yellow	1	25	Universal Self-adhesive	No



# Wire and cable markers

## Cable marker sleeves for wire markers PC



Characteristics	
Marker material	Polyvinyl chloride PVC, soft
Flamm. class acc. to UL 94	V-0
Temperature range	- 15 °C to + 70 °C
Mounting	Slide-on
Matching markers	PC/HF-SI2K02W series, MC-ESS series high pocket for PC and PA wire markers

Cat. no.	Type	Dimensions L x W, mm	Colour	Outer diameter of insulation		Qty.	Compatibility
				min. mm	max. mm		
33650.0	KH 201/10	10 x 4	Transparent	1.5	2.5	3000	PC and PA wire markers
33651.0	KH 201/12	12 x 4	Transparent	1.5	2.5	3000	PC and PA wire markers
33652.0	KH 201/15	15 x 4	Transparent	1.5	2.5	3000	PC and PA wire markers
33653.0	KH 201/18	18 x 4	Transparent	1.5	2.5	3000	PC and PA wire markers
33654.0	KH 201/23	23 x 4	Transparent	1.5	2.5	2000	PC and PA wire markers
33655.0	KH 201/30	30 x 4	Transparent	1.5	2.5	1500	PC and PA wire markers
33656.0	KH 202/10	10 x 4	Transparent	2	4	3000	PC and PA wire markers
33657.0	KH 202/12	12 x 4	Transparent	2	4	3000	PC and PA wire markers
33658.0	KH 202/15	15 x 4	Transparent	2	4	3000	PC and PA wire markers
33659.0	KH 202/18	18 x 4	Transparent	2	4	3000	PC and PA wire markers
33660.0	KH 202/23	23 x 4	Transparent	2	4	2000	PC and PA wire markers
33661.0	KH 202/30	30 x 4	Transparent	2	4	1500	PC and PA wire markers
33662.0	KH 203/10	10 x 4	Transparent	4	7	3000	PC and PA wire markers
33663.0	KH 203/12	12 x 4	Transparent	4	7	2000	PC and PA wire markers
33664.0	KH 203/15	15 x 4	Transparent	4	7	2000	PC and PA wire markers
33665.0	KH 203/18	18 x 4	Transparent	4	7	2000	PC and PA wire markers
33666.0	KH 203/23	23 x 4	Transparent	4	7	1000	PC and PA wire markers
33667.0	KH 203/30	30 x 4	Transparent	4	7	1000	PC and PA wire markers
33668.0	KH 204/10	10 x 4	Transparent	6	10	2000	PC and PA wire markers
33669.0	KH 204/12	12 x 4	Transparent	6	10	2000	PC and PA wire markers
33670.0	KH 204/15	15 x 4	Transparent	6	10	1500	PC and PA wire markers
33671.0	KH 204/18	18 x 4	Transparent	6	10	1000	PC and PA wire markers
33672.0	KH 204/23	23 x 4	Transparent	6	10	500	PC and PA wire markers
33673.0	KH 204/30	30 x 4	Transparent	6	10	500	PC and PA wire markers
33674.0	KH 205/10	10 x 4	Transparent	10	14	1500	PC and PA wire markers
33675.0	KH 205/12	12 x 4	Transparent	10	14	1000	PC and PA wire markers
33676.0	KH 205/15	15 x 4	Transparent	10	14	750	PC and PA wire markers
33677.0	KH 205/18	18 x 4	Transparent	10	14	500	PC and PA wire markers
33678.0	KH 205/23	23 x 4	Transparent	10	14	500	PC and PA wire markers
33679.0	KH 205/30	30 x 4	Transparent	10	14	500	PC and PA wire markers

## Cable marker sleeves for wire markers PVC



Characteristics	
Marker material	Polyvinyl chloride PVC, hard
Flamm. class acc. to UL 94	V-0
Temperature range	- 15 °C to + 70 °C
Mounting	Slide-on
Matching markers	PVC-EVOCT series flat pocket for PVC wire markers

Cat. no.	Type	Dimensions L x W, mm	Colour	Outer diameter of insulation		Qty.	Compatibility
				min. mm	max. mm		
33680.0	KH 501/10	10 x 4	Transparent	1.5	2.5	3000	PVC wire markers
33681.0	KH 501/12	12 x 4	Transparent	1.5	2.5	3000	PVC wire markers
33682.0	KH 501/15	15 x 4	Transparent	1.5	2.5	3000	PVC wire markers
33683.0	KH 501/18	18 x 4	Transparent	1.5	2.5	3000	PVC wire markers
33684.0	KH 501/23	23 x 4	Transparent	1.5	2.5	2000	PVC wire markers
33685.0	KH 501/30	30 x 4	Transparent	1.5	2.5	1500	PVC wire markers
33686.0	KH 502/10	10 x 4	Transparent	2	4	3000	PVC wire markers
33687.0	KH 502/12	12 x 4	Transparent	2	4	3000	PVC wire markers
33788.0	KH 502/15	15 x 4	Transparent	2	4	3000	PVC wire markers
33789.0	KH 502/18	18 x 4	Transparent	2	4	3000	PVC wire markers
33790.0	KH 502/23	23 x 4	Transparent	2	4	2000	PVC wire markers
33791.0	KH 502/30	30 x 4	Transparent	2	4	1500	PVC wire markers
33792.0	KH 503/10	10 x 4	Transparent	4	7	3000	PVC wire markers
33793.0	KH 503/12	12 x 4	Transparent	4	7	2000	PVC wire markers
33794.0	KH 503/15	15 x 4	Transparent	4	7	2000	PVC wire markers
33795.0	KH 503/18	18 x 4	Transparent	4	7	2000	PVC wire markers
33796.0	KH 503/23	23 x 4	Transparent	4	7	1500	PVC wire markers
33797.0	KH 503/30	30 x 4	Transparent	4	7	1000	PVC wire markers
33798.0	KH 504/10	10 x 4	Transparent	6	10	2000	PVC wire markers
33799.0	KH 504/12	12 x 4	Transparent	6	10	2000	PVC wire markers
33800.0	KH 504/15	15 x 4	Transparent	6	10	1500	PVC wire markers
33801.0	KH 504/18	18 x 4	Transparent	6	10	1000	PVC wire markers
33802.0	KH 504/23	23 x 4	Transparent	6	10	1000	PVC wire markers
33803.0	KH 504/30	30 x 4	Transparent	6	10	400	PVC wire markers
33804.0	KH 505/10	10 x 4	Transparent	10	14	500	PVC wire markers
33805.0	KH 505/12	12 x 4	Transparent	10	14	500	PVC wire markers
33806.0	KH 505/15	15 x 4	Transparent	10	14	500	PVC wire markers
33807.0	KH 505/18	18 x 4	Transparent	10	14	500	PVC wire markers
33808.0	KH 505/23	23 x 4	Transparent	10	14	500	PVC wire markers
33809.0	KH 505/30	30 x 4	Transparent	10	14	400	PVC wire markers

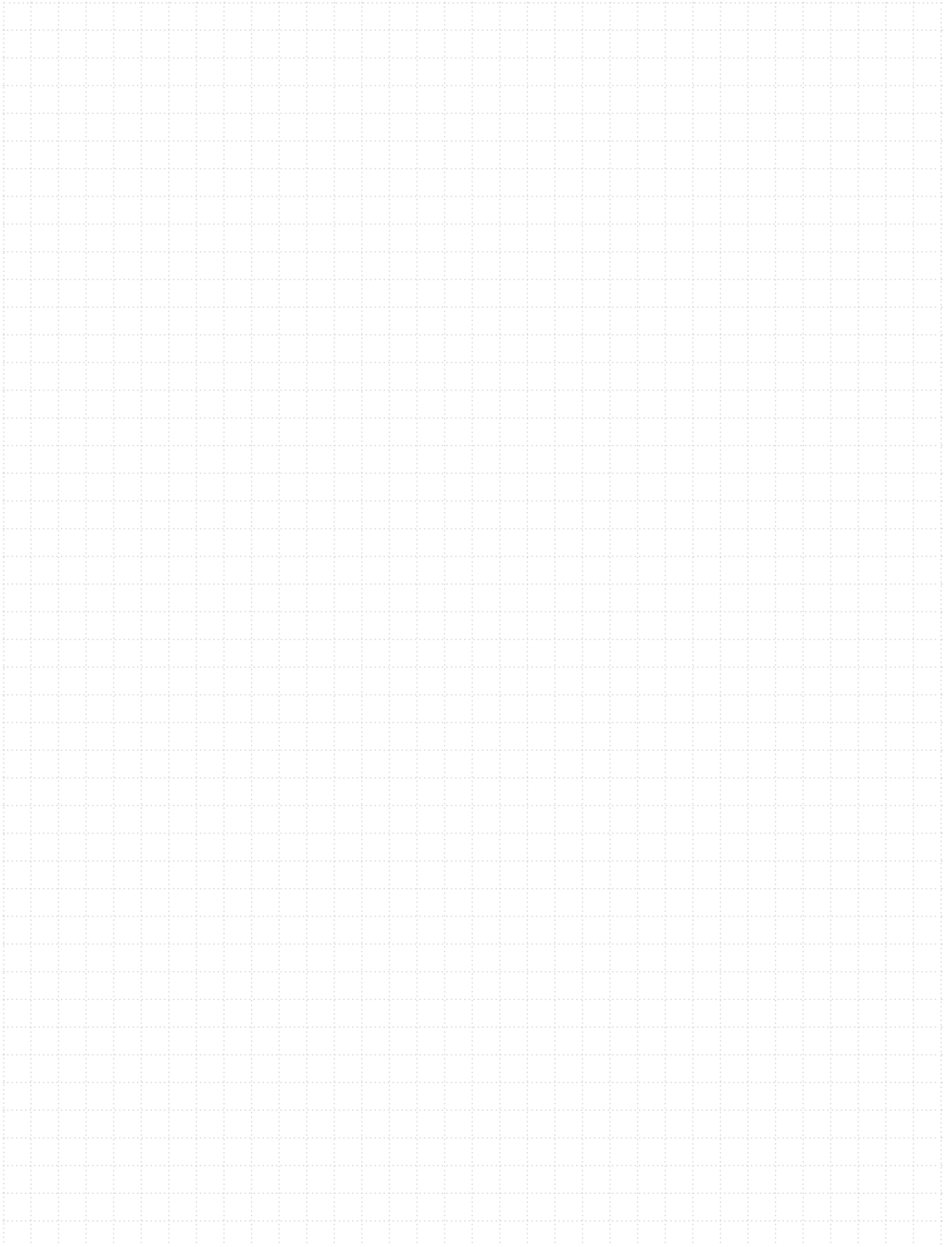
# Wire and cable markers

## Cable marker sleeves for wire markers PC, halogenfree



Characteristics	
Marker material	Polyurethane PUR, soft
Flamm. class acc. to UL 94	V-0
Temperature range	- 60 °C to + 80 °C
Mounting	Slide-on
Matching markers	PC/HF-SI2K02W series, MC-ESS series high pocket for PC and PA wire markers

Cat. no.	Type	Dimensions L x W, mm	Colour	Outer diameter of insulation		Qty.	Compatibility
				min. mm	max. mm		
33810.0	KHZ 201HF/10	10 x 4	Transparent	1.5	2.5	3000	PC and PA wire markers
33811.0	KHZ 201HF/12	12 x 4	Transparent	1.5	2.5	3000	PC and PA wire markers
33812.0	KHZ 201HF/15	15 x 4	Transparent	1.5	2.5	3000	PC and PA wire markers
33813.0	KHZ 201HF/18	18 x 4	Transparent	1.5	2.5	3000	PC and PA wire markers
33814.0	KHZ 201HF/23	23 x 4	Transparent	1.5	2.5	2000	PC and PA wire markers
33815.0	KHZ 201HF/30	30 x 4	Transparent	1.5	2.5	1500	PC and PA wire markers
33816.0	KHZ 202HF/10	10 x 4	Transparent	2	4	3000	PC and PA wire markers
33817.0	KHZ 202HF/12	12 x 4	Transparent	2	4	3000	PC and PA wire markers
33818.0	KHZ 202HF/15	15 x 4	Transparent	2	4	3000	PC and PA wire markers
33819.0	KHZ 202HF/18	18 x 4	Transparent	2	4	3000	PC and PA wire markers
33820.0	KHZ 202HF/23	23 x 4	Transparent	2	4	2000	PC and PA wire markers
33821.0	KHZ 202HF/30	30 x 4	Transparent	2	4	1500	PC and PA wire markers
33822.0	KHZ 203HF/10	10 x 4	Transparent	4	7	3000	PC and PA wire markers
33823.0	KHZ 203HF/12	12 x 4	Transparent	4	7	2000	PC and PA wire markers
33824.0	KHZ 203HF/15	15 x 4	Transparent	4	7	2000	PC and PA wire markers
33825.0	KHZ 203HF/18	18 x 4	Transparent	4	7	2000	PC and PA wire markers
33826.0	KHZ 203HF/23	23 x 4	Transparent	4	7	1000	PC and PA wire markers
33827.0	KHZ 203HF/30	30 x 4	Transparent	4	7	1000	PC and PA wire markers
33828.0	KHZ 204HF/10	10 x 4	Transparent	6	10	2000	PC and PA wire markers
33829.0	KHZ 204HF/12	12 x 4	Transparent	6	10	2000	PC and PA wire markers
33830.0	KHZ 204HF/15	15 x 4	Transparent	6	10	1500	PC and PA wire markers
33831.0	KHZ 204HF/18	18 x 4	Transparent	6	10	1000	PC and PA wire markers
33832.0	KHZ 204HF/23	23 x 4	Transparent	6	10	500	PC and PA wire markers
33833.0	KHZ 204HF/30	30 x 4	Transparent	6	10	500	PC and PA wire markers
33834.0	KHZ 205HF/10	10 x 4	Transparent	10	14	1500	PC and PA wire markers
33835.0	KHZ 205HF/12	12 x 4	Transparent	10	14	1000	PC and PA wire markers
33836.0	KHZ 205HF/15	15 x 4	Transparent	10	14	750	PC and PA wire markers
33837.0	KHZ 205HF/18	18 x 4	Transparent	10	14	500	PC and PA wire markers
33838.0	KHZ 205HF/23	23 x 4	Transparent	10	14	500	PC and PA wire markers
33839.0	KHZ 205HF/30	30 x 4	Transparent	10	14	500	PC and PA wire markers



# Device and installation markers

## Self-adhesive marker cards PC, direct in-feed

Characteristics	
Marker material	Polycarbonate, halogen-free
Flamm. class acc. to UL 94	V-0
Temperature range	- 40 °C to + 130 °C
Mounting	Self-adhesive
Additional colours available upon request	● ● ● ● ● ● ●



Cat. no.	Type	Dimensions L x W, mm	Colour	Markers/ Card	Qty.	Compatibility	Inlay
33152.7	PC/HF-EVOHF40827W WH	27 x 8	White	40	520	Universal self-adhesive	No
33153.7	PC/HF-EVOHF41527 WH	27 x 15	White	24	312	Universal self-adhesive	No
33154.7	PC/HF-EVOHF41827 WH	27 x 18	White	24	264	Universal self-adhesive	No
33155.7	PC/HF-EVOHF42027 WH	27 x 20	White	16	288	Universal self-adhesive	No
33156.7	PC/HF-EVOHF42727 WH	27 x 27	White	16	352	Universal self-adhesive	No
33157.7	PC/HF-EVOHF41550 WH	50 x 15	White	12	156	Universal self-adhesive	No
33158.7	PC/HF-EVOHF42050 WH	50 x 20	White	8	144	Universal self-adhesive	No
33160.7	PC/HF-EVOHF41567 WH	67 x 15	White	9	117	Universal self-adhesive	No
33161.7	PC/HF-EVOHF42067 WH	67 x 20	White	6	108	Universal self-adhesive	No
33629.7	PC/HF-SI2KHF415215 WH	215 x 15	White	2	46	Universal self-adhesive	No

## Self-adhesive marker cards PC for buttons, direct in-feed

Characteristics	
Marker material	Polycarbonate, halogen-free
Flamm. class acc. to UL 94	V-0
Temperature range	- 40 °C to + 130 °C
Mounting	Self-adhesive
Additional colours available upon request	● ● ● ● ● ● ●



Cat. no.	Type	Dimensions L x W, mm	Colour	Markers/ Card	Qty.	Compatibility	Inlay
33162.7	PC/HF-EVOHF4404 WH	30 x 40	White	10	270	Diameter 22.5 mm	No
33164.7	PC/HF-EVOHF4408 WH	50 x 50	White	4	108	Diameter 24.5 mm	No
33165.7	PC/HF-EVOHF4412 WH	50 x 50	White	4	108	Diameter 30.5 mm	No

## Self-adhesive marker cards PC for electrical cabinets and rating plates, direct in-feed

Characteristics	
Marker material	Polycarbonate, halogen-free
Flamm. class acc. to UL 94	V-0
Temperature range	- 40 °C to + 130 °C
Mounting	Self-adhesive
Additional colours available upon request	● ● ● ● ● ● ●



Cat. no.	Type	Dimensions L x W, mm	Colour	Markers/ Card	Qty.	Compatibility	Inlay
33262.7	PC/HF-EVOHF42067 WH	215 x 20	White	2	40	Universal self-adhesive	No
33288.7	PC/HF-EVOHF43070 WH	70 x 30	White	3	48	Universal self-adhesive	No
33289.7	PC/HF-EVOHF44090 WH	90 x 40	White	2	36	Universal self-adhesive	No
33290.7	PC/HF-EVOHF460100 WH	100 x 60	White	2	36	Universal self-adhesive	No
33291.7	PC/HF-EVOHF460150 WH	150 x 60	White	1	17	Universal self-adhesive	No
33306.7	PC/HF-EVOHF3070 WH	70 x 30	White	3	48	Slotted	No
33307.7	PC/HF-EVOHF4090 WH	90 x 40	White	2	36	Slotted	No
33308.7	PC/HF-EVOHF60100 WH	100 x 60	White	2	36	Slotted	No
33311.7	PC/HF-EVOHF60150 WH	150 x 60	White	1	17	Slotted	No



Scan the QR code and get more information



## Marker cards for PVC marker holders, direct in-feed

Characteristics	
Marker material	Polyvinyl chloride PVC
Flamm. class acc. to UL 94	V-0
Temperature range	- 10 °C to + 50 °C
Mounting	Self-adhesive
Additional colours available upon request	● ● ● ● ● ● ●



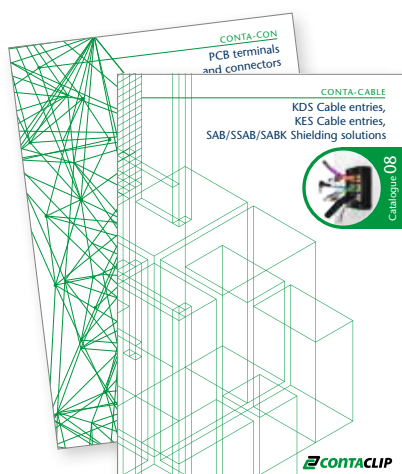
Cat. no.	Type	Dimensions L x W, mm	Colour	Markers/ Card	Qty.	Compatibility	Inlay
33177.7	PVC-EVO40827 WH	27 x 8	White	40	440	Universal self-adhesive	No
33181.7	PVC-EVO41827 WH	27 x 18	White	26	288	Universal self-adhesive	No
33185.7	PVC-EVO42727 WH	27 x 27	White	16	288	Universal self-adhesive	No
33192.7	PVC-EVO41550 WH	50 x 15	White	12	132	Universal self-adhesive	No

## Vinyl labels, direct in-feed

Characteristics	
Marker material	Vinyl
Temperature range	- 40 °C to + 110 °C
Mounting	Self-adhesive
Additional colours available upon request	● ●



Cat. no.	Type	Dimensions L x W, mm	Colour	Markers/ Card	Qty.	Compatibility	Inlay
33382.7	VYL-EVOFX0407 WH	7 x 4	White	150	3000	Universal self-adhesive	No
33388.7	VYL-EVOFX0615 WH	15 x 6	White	112	2240	Universal self-adhesive	No
33390.7	VYL-EVOFX0915 WH	15 x 9	White	70	1400	Universal self-adhesive	No
33393.7	VYL-EVOFX1517 WH	17 x 15	White	36	720	Universal self-adhesive	No
33394.7	VYL-EVOFX0720 WH	20 x 7	White	70	1400	Universal self-adhesive	No
33397.7	VYL-EVOFX2222 WH	22 x 22	White	20	400	Universal self-adhesive	No
33399.7	VYL-EVOFX1527 WH	27 x 15	White	24	480	Universal self-adhesive	No
33403.7	VYL-EVOFX1550 WH	50 x 15	White	12	240	Universal self-adhesive	No



## Our products for your challenges:

- 01** **CONTA-CONNECT**  
Terminal blocks  
with Push-in connection system  
Cat. no. 98070.2
- 02** **CONTA-CONNECT**  
Terminal blocks with screw connection system  
and special purpose terminals  
Cat. no. 98071.2
- 03** **CONTA-CONNECT**  
Terminal blocks  
with tension-spring connection system  
Cat. no. 98072.2
- 04** **CONTA-CONNECT**  
Installation materials and  
other accessories for terminal blocks  
Cat. no. 98073.2
- 05** **CONTA-LABEL**  
Marking components  
for thermal-transfer marking systems  
Cat. no. 98074.2
- 06** **CONTA-LABEL**  
Marking components  
for ink-based marking systems  
Cat. no. 98075.2
- 07** **CONTA-BOX**  
Housings  
Cat. no. 98076.2
- 08** **CONTA-CABLE**  
KDS cable entries, KES cable entries,  
SAB/SSAB/SABK shielding solutions  
Cat. no. 98077.2
- 09** **CONTA-ELECTRONICS**  
Electrical and electronic  
cabinet components  
Cat. no. 98078.2
- 10** **CONTA-CON**  
PCB terminals  
and connectors  
Cat. no. 98079.2