

CONTASign Pro



Software installation and
registration

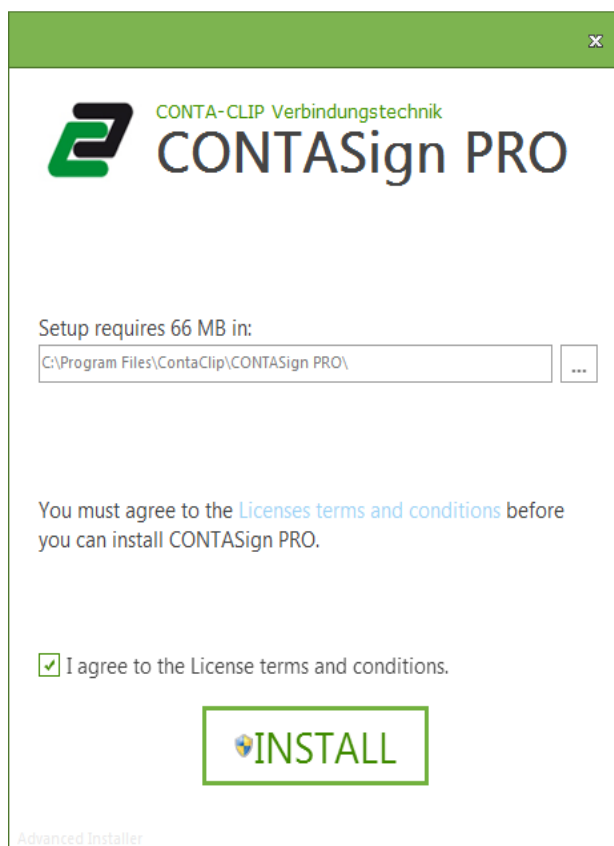
1.0 System requirements

- PC Processor Pentium®Dual-Core *inside*™
- 2 Gb RAM
- Windows: XP (SP3), Vista , 7 or 8
- Microsoft .NET Framework 4.0
- Internet connection for registration and License activation, software upgrade, remote access support and training
- USB connection
- 2 Gb available HD space
- CD drive
- Video resolution 1280x1024

2.0 Software installation

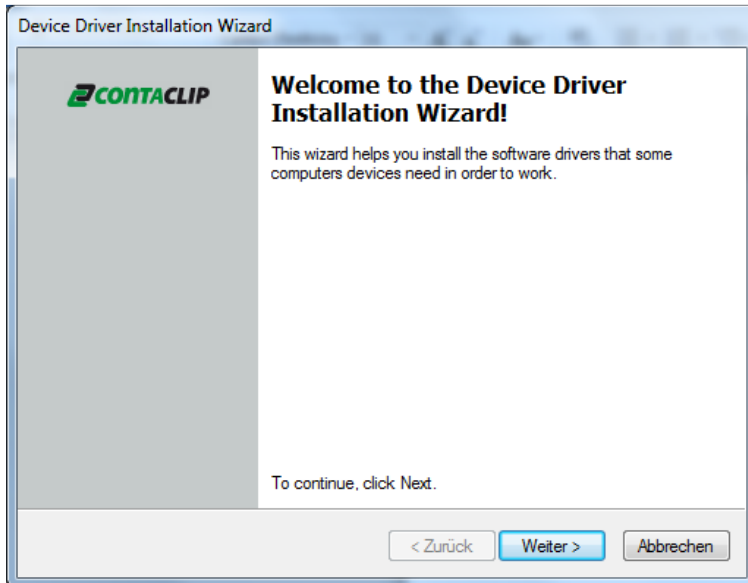
Insert the GENIUSPRO cd into the pc. Wait for the Auto-run window, the installation process will then start automatically. The setup checks for the presence of additional components. If necessary confirm component installation.

Select I agree to the License terms and conditions and then click on **Install**

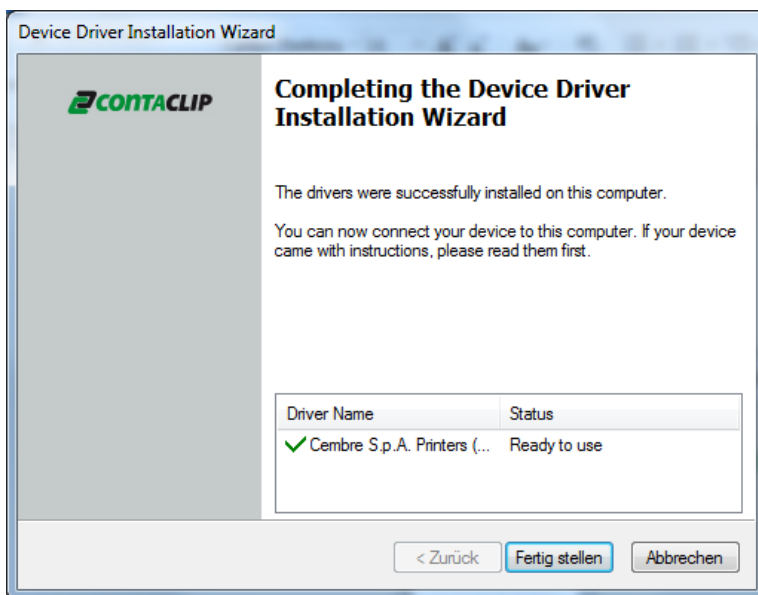


Depending on the additional components that need to be installed the installation of CONTA-Sign Pro will take several minutes.

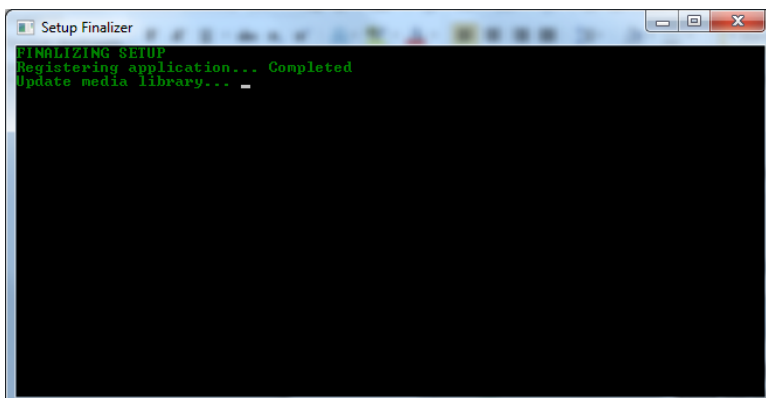
The driver wizard is shown, click **next** to proceed.



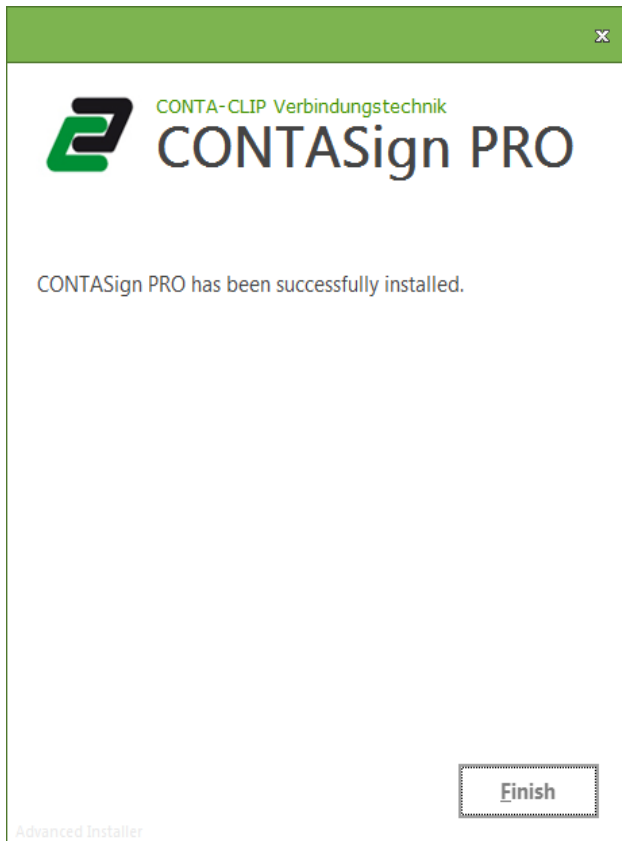
Click **finish** to complete the installation of the driver.



The CONTASign Pro Setup Finalizer will start.

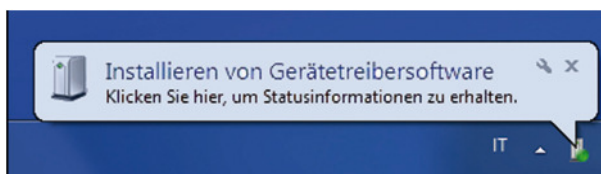


Wait till the CONTASign Pro screen is shown and click Finnish to complete the installation.



Connect the USB cable between the TTPCard and the computer. Connect the TTCard to the main power and switch the device on at the back of the TTPCard. Windows will indicate that it has found new hardware.

WINDOWS (7 and 8) configures the drivers automatically. It may take a few minutes to complete.

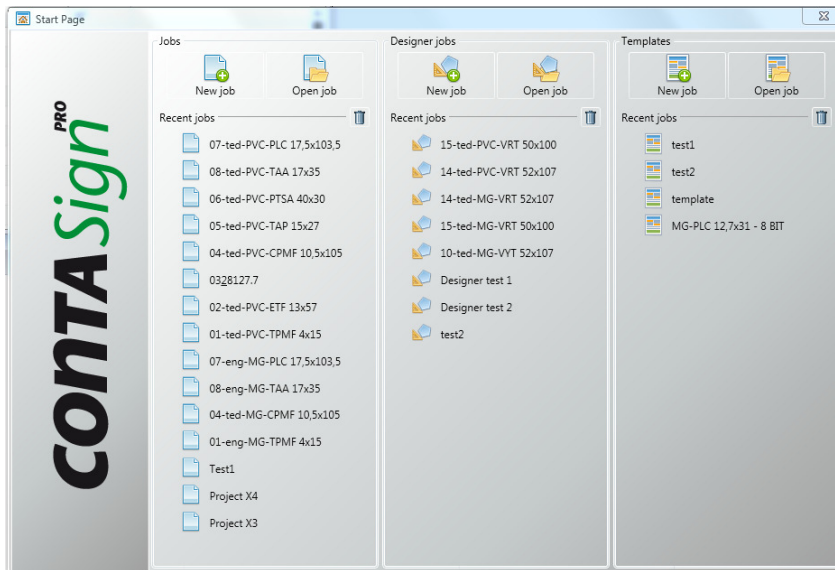


If successful, the TTPCard (MG3) icon will appear in Devices and Printers.

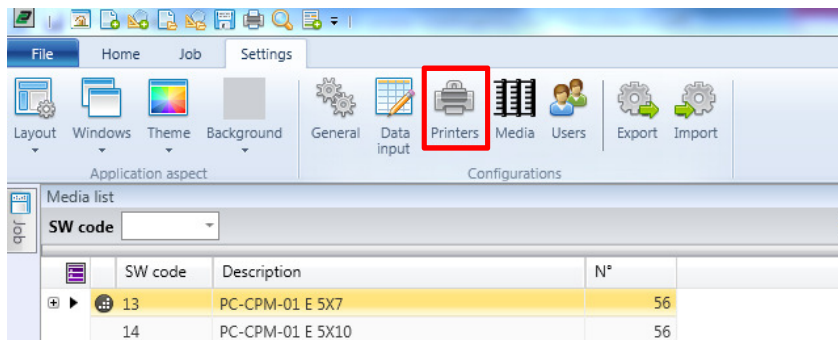


3.0 Configuration of the Software

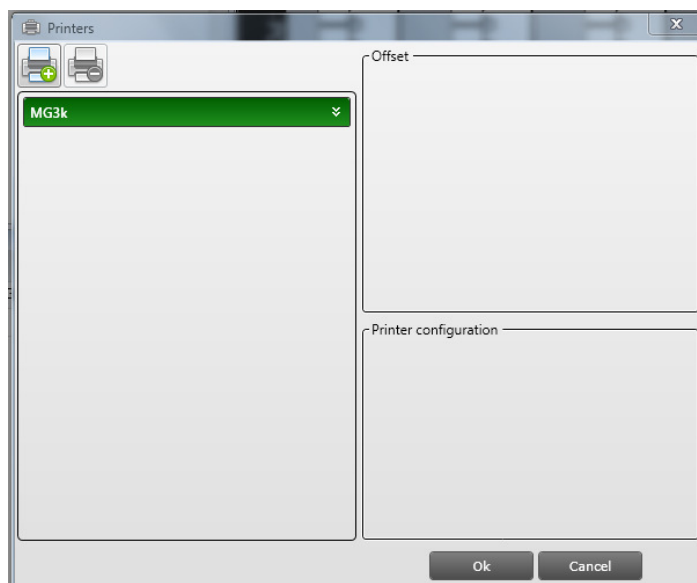
Double click on the CONTASign Pro icon on the desktop, a loading window will appear until the Start window indicates the program is ready.



In Start window, click **Settings**, then **Printers**



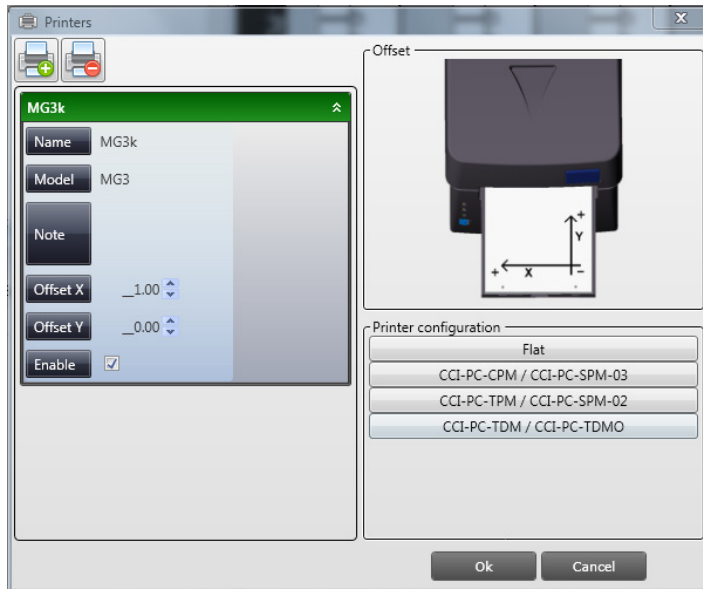
In **Printer configuration**, click **Add Printer** and select TTPCard (MG3) from the list.



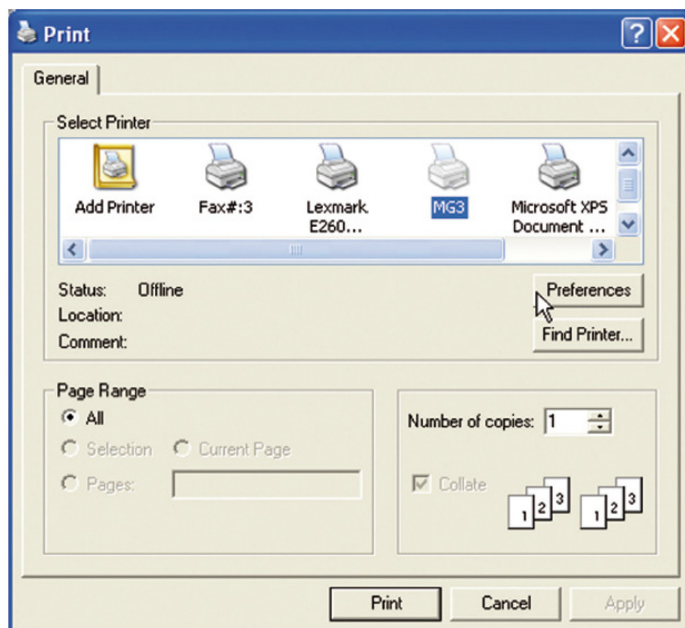
The CONTASign Pro configuration is finished. Now you can print with the TTPCard.
If the TTPCard does not accept the inlay than the inlays need to be configured.

3.1 Inlay configuration

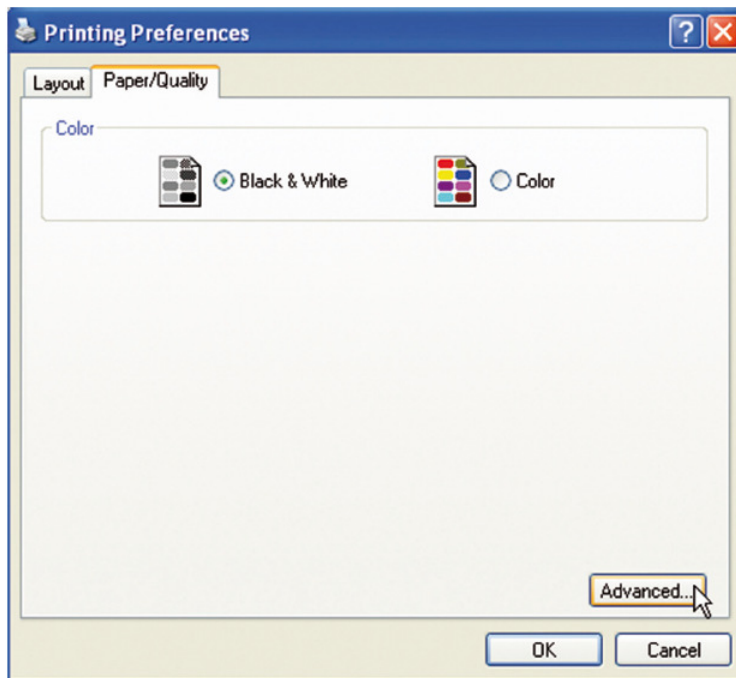
Select TTPCard (MG3) printer and click one of the four printing configurations inlays (here flat).



Click on Preferences.



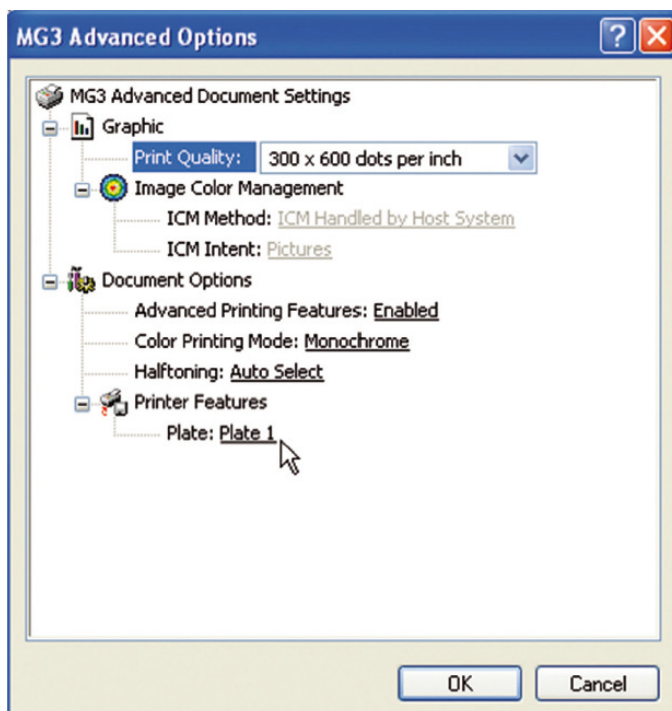
Select the colour option, **Black & White** then select **Advanced**



Set the values:

Print quality: **300 x 600 dpi**

Plate: **Plate 1**



Click **OK** for all the open windows to confirm the new settings. Return to **Printer configuration** window. Repeat the operation for the other inlays by setting:

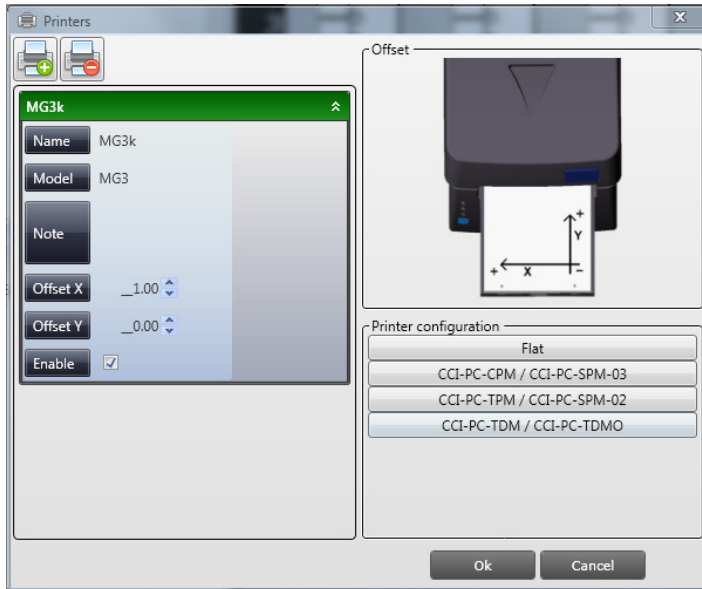
CCI-PC-CPM / CCI-PC-SPM-03 = *plate 2*

CCI-PC-TPM / CCI-PC-SPM-02 = *plate 3*

CCI-PC-TDM / CCI-PC-TDMO = *plate 4*

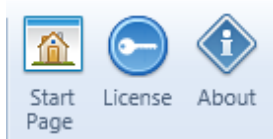
3.2 Edit offset

System default print position values. Normally these values are set to 0 and do not require any adjustments. On individual media offset changes can be made by pressing the **Offset X** and **Offset Y** buttons.

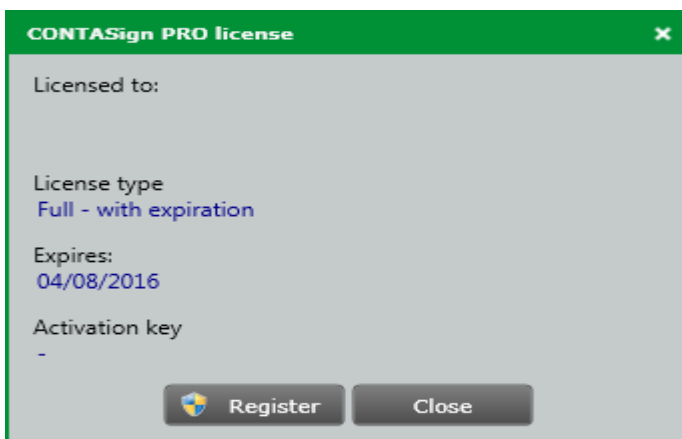


4.0 User Registration Process

Start CONTASign Pro and Click **License** on the Home ribbon.



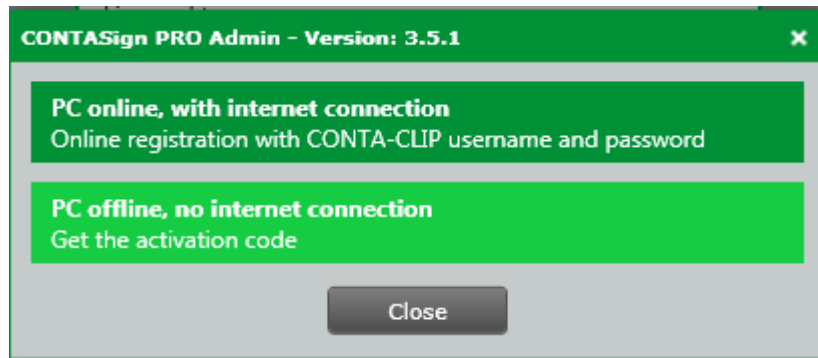
The Application window shows current license details. Click **Register**



Choose Online or Offline method of License activation.

Online Registration only if the PC running CONTASign Pro is connected to the Internet.

Offline Registration only if the PC running CONTASign Pro is not connected to the Internet.

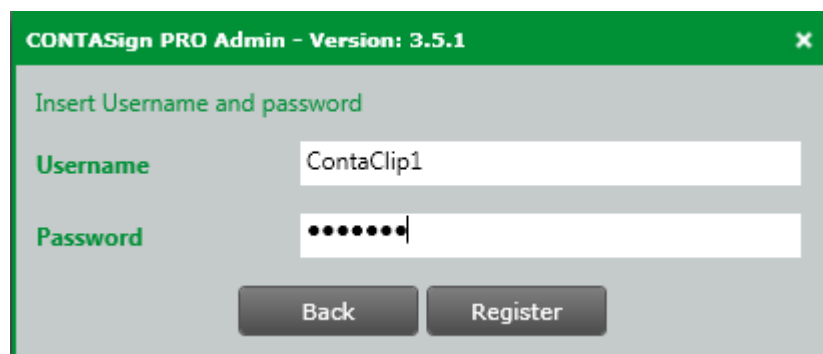


4.1 Automatic registration

Click **Online registration** and enter username and password as below to activate the software:

Username : ContaClip1
Password : TTPCard

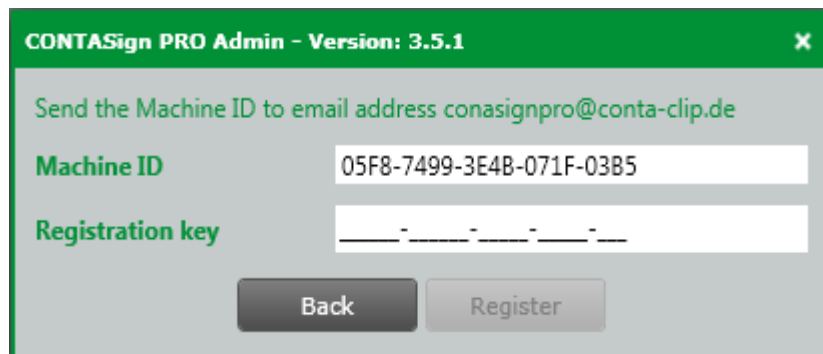
CONTASign Pro will be activated automatically.



4.2 Manual (offline) registration

Click **Offline Registration** only if the PC running CONTASign Pro is not connected to the Internet.

When clicking offline registration the machine ID of the PC will be shown. In the second row the registration key is requested.



Please send a mail with the machine ID to conasignpro@conta-clip.de and you will receive a mail back which contains the registration key.

Please enter the registration key in the second row, click on register and the software will be activated.