

Guideline EMS Firmware update for W7 64-bit application.

Guideline for all available CONTA-CLIP plotter systems:

- EMS2-DIN A3
- EMS2-DIN A4
- EMS-eco-DIN A4

The EMS plotter system will only work with a W7 64-bit computer when the plotter firmware is version 1.14J or higher. If the firmware has a lower version than is has to be updated else the plotter won't work.

Important: Updating the firmware to version 1.14J or higher can only be done by the use of a W2000, Windows XP, Vista 32-bit or W7 32-bit system. It is not possible to run this update with a W7 64-bit system.

Download the latest firmware and drivers under:

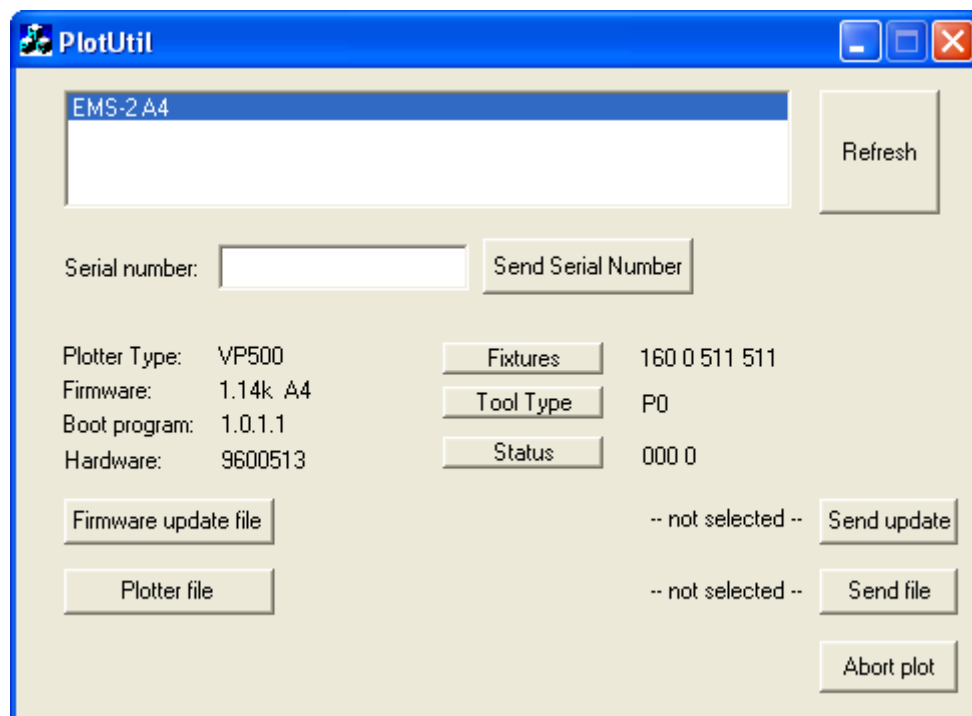
<http://www.conta-clip.de/en/support-downloads/downloads.html>

After download unzip the file.

1. Check the current firmware version.

Connect the plotter with you're computer and switch it on. After the plotter has ended its start-up cycle, run program PlotUtil.exe.

The next screen will open:



After Firmware the current version of this firmware will appear. If this is 1.14J or higher than the plotter can be used in combination with a W7 64-bit system, if it is lower than please proceed with the next steps

Note: The firmware check can be done with a W7 64-bit computer.

2. Update the Firmware

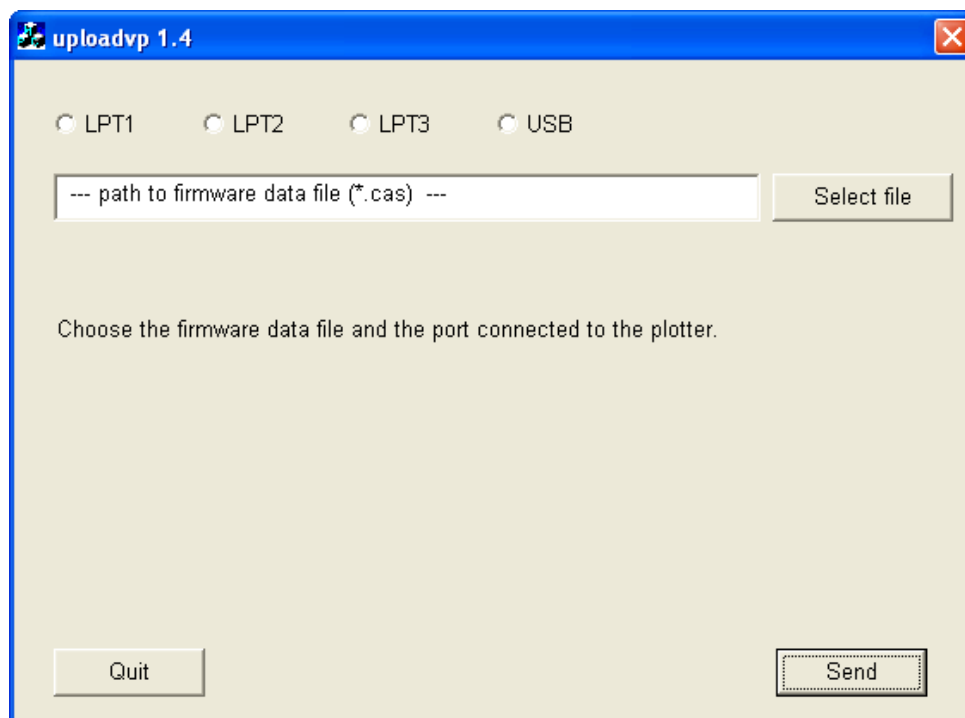
Connect the plotter to a Window XP, W2000, Vista-32 bit or W7 64-bit system but **don't** switch it on.

Open the folder **EMS_Firmware_and_Drivers\Firmware**.

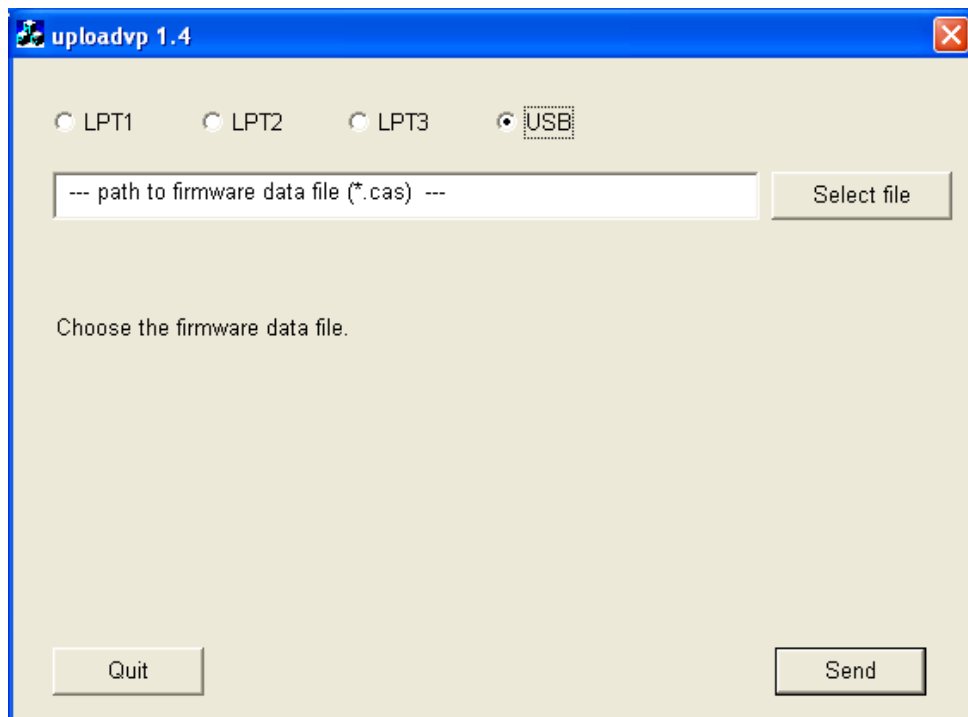
Now select a folder depending on the used plotter system f.e. **Firmware-update-EMS-2_A4-114k**.

Run the program uploadvp.exe.

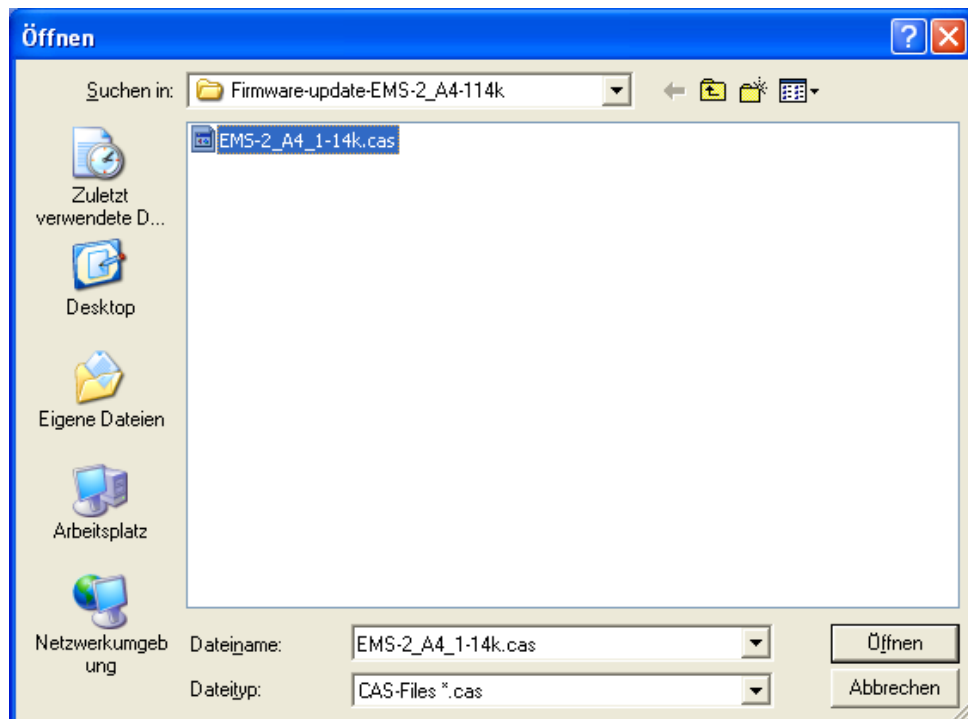
The next screen will open:

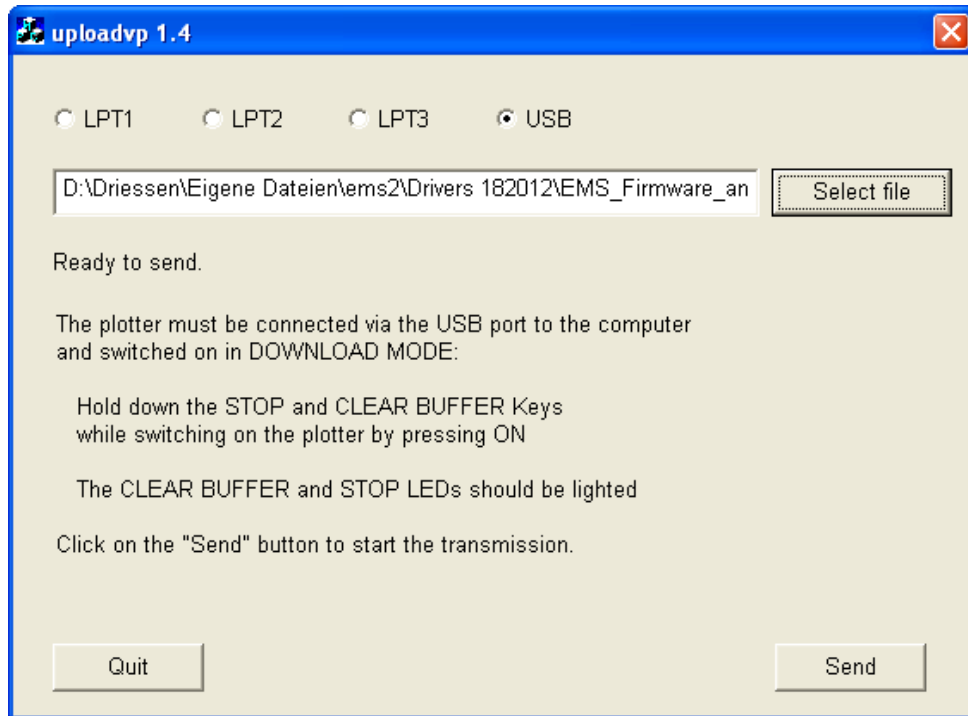


Select witch type of printer port you are using LTP1, LTP2, LTP3 or USB.



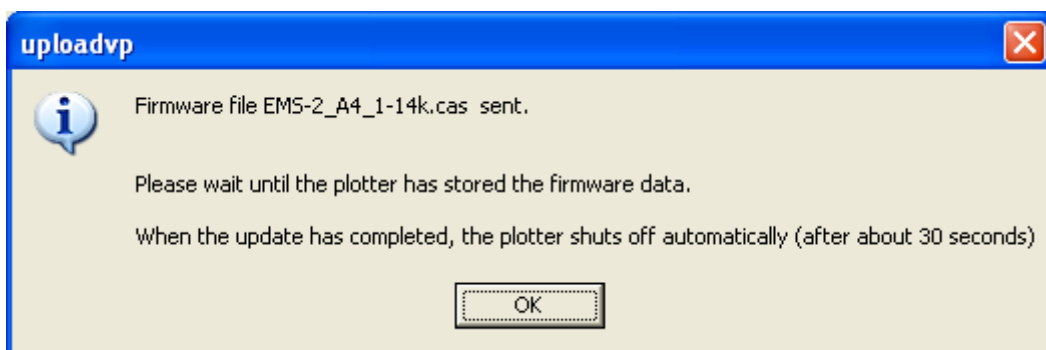
Select the firmware update file depending on the plotter type.
This is a file with extension **.CAS**.





Now switch on the plotter in the download mode. This can be done by holding down the STOP and CLEAR BUFFER keys while switching on the plotter by pressing the ON button. Now the CLEAR BUFFER and STOP LED's should be lit. Click on the `SEND` button to start the firmware update.

The next screen will open:



The plotter will shut down automatically and the firmware update is completed.

Important: Before connecting the Plotter to the W7 64-bit system please take care that the right drivers have been installed on the system. The guideline how to do this can be found on the CONTA-CLIP homepage under:

http://www.conta-clip.de/uploads/media/Advice_Installing_EMS_Plotter_Driver_CONTA-Sign_CS_5.pdf